

PURPLE LINE

Art-in-Transit

Manchester Place

Peter Erskine

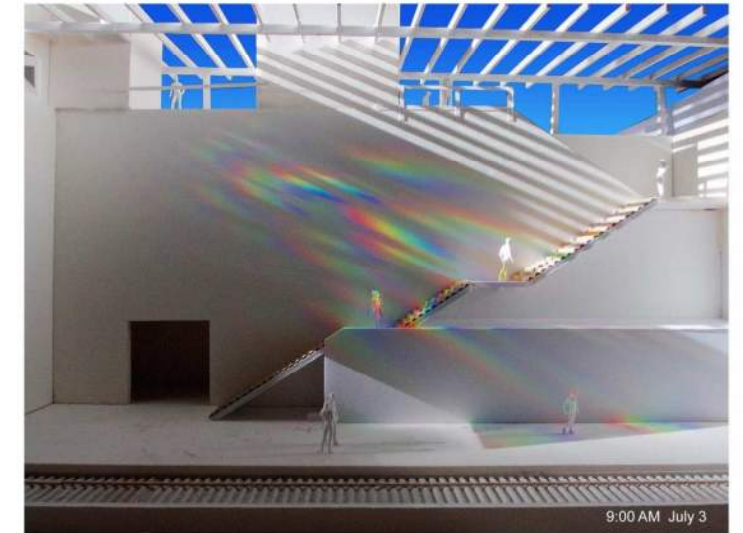
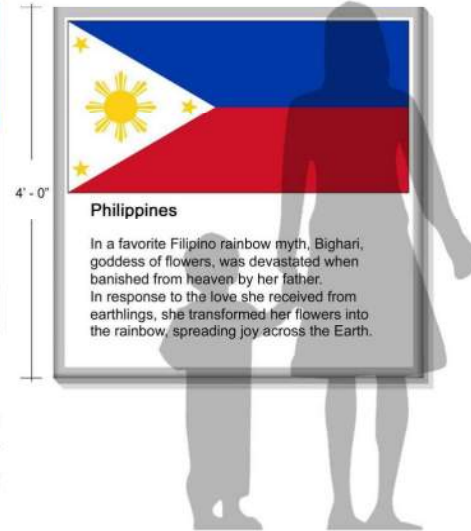
MOMENTS OF DELIGHT IN MANCHESTER PLACE STATION – A YEAR OF INTERNATIONAL RAINBOWS

CELEBRATING THE INTERNATIONAL COMMUNITY AND THEIR RAINBOW STORIES



PORTAL TO THE "INTERNATIONAL CORRIDOR"

[The artist] celebrates the "International Corridor's" rainbow of over 100 cultures by printing selected flags of national origin, and texts of their rainbow legends on 4' x 4' square plaques installed on the station's west Wing Walls. (Note: flags shown are temporary place holders)



ABOVE and BELOW: Morning and afternoon solar spectrum paintings wash the Plymouth Street balcony and stairs with drifting color.

As the Sun's angles change by the hour, the solar colors shift, and appear in different parts of the station.

MADE WITH PRISMS AND THE WONDER OF SUNLIGHT



FREE SOLAR POWER A view of two, of the five, large Track Level Prisms totaling forty square yards of area, will capture and refract up to 35,000 watts of free, sustainable solar power. Environmentally Friendly Solar Energy with *no electric bills, no moving parts - and only window washing for maintenance.*



Looking down stairs to the tracks.



Climb the stairs to find the pot of gold at the end of the rainbow.



Sunbeams, pulsing with radiant hues, flood the south platform's track bed.

THIS ART CHANGES EVERY MINUTE, HOUR, DAY, AND SEASON

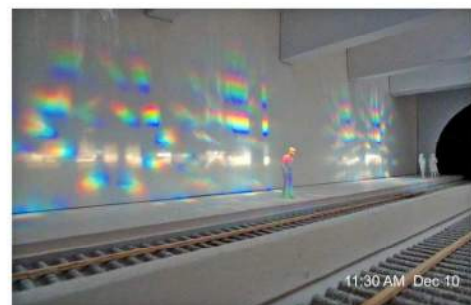
MOMENTS OF DELIGHT Powered by life-giving Sunlight, the endless rotation of the Earth, the weather, and the changing solar angles of the seasons, these Rainbow Light Paintings continually morph, surprise and delight. They never repeat. - Always a fresh offering.



GIANT RAINBOWS TRANSFORM the station into a planetary clock as the Earth spins and orbits round the Sun.



In winter, the low Sun angle washes veils of shimmering color high onto the North Platform wall.



STEPPING INSIDE THE STATION, the rainbow colors takes our breath away.



FEATHERY SUNBEAMS change shape and hue as they gradually flow across the tracks.

MATERIALS AND TECHNIQUES



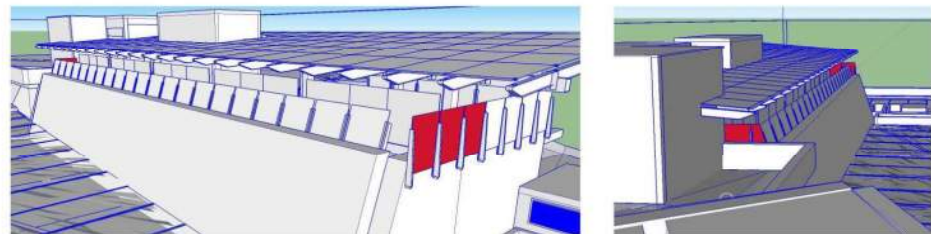
ROBUST, GRAFFITI-RESISTANT SIGNAGE

4' x 4' porcelain-on-steel plaques will be fabricated by Cherokee Porcelain Inc. to the same spec they use to make all the porcelain-on-steel signage for the NYC, DC and Chicago subways. Unlike other pigments, these ceramic colors will not fade. The ceramic surface of the plaques will resist typical cleaning products and high pressure water spray.

The flags will remain as bright as the station's rainbows for hundreds of years.



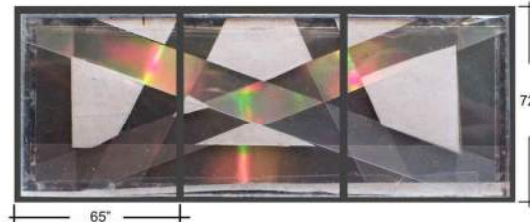
LOCATION OF GUARD RAIL PRISMS IN RED
New Prism Modules, proposed to replace the metal fencing, will be made to the same spec as Purple Line wind screen glass.



East and West wind screen Prism location shown in red. These Prisms project early morning and late afternoon Solar Spectrum beams onto the stairs and track level.



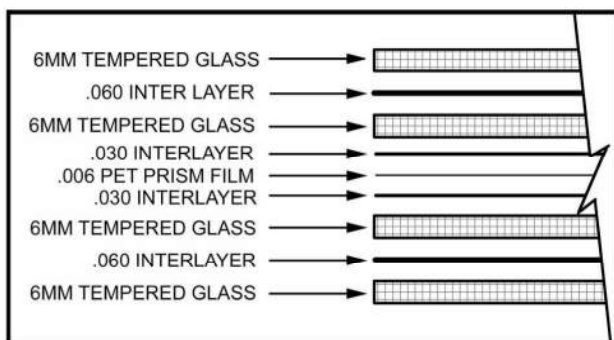
RED INDICATES TRACK LEVEL PRISMS
Five Solar Prisms will be installed between the six concrete cross beams. Prisms are made of three metal framed modules. The Modules will be anchored to the concrete roof structure with engineered, poured-in-place attachments.



SCALE MOCK-UP OF PRISM

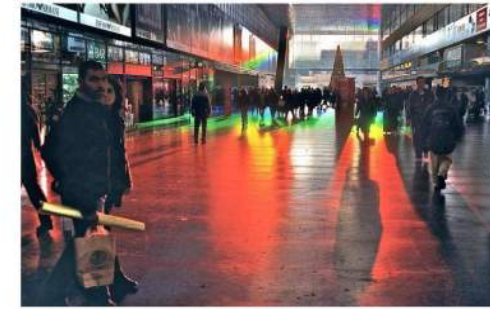
Each laminated and tempered glass module is approximately 65"W x 72"H x 1"D. Each prism has 3 modules.

THE WONDER OF SUNLIGHT



EXPLODED CROSS-SECTION OF TYPICAL GLASS PRISM MODULE: Fabricated from 4 layers of 6mm tempered and laminated glass with .060" interlayers. The laser-cut PET prism film will be sandwiched and laminated inside the center layer.

SOME PREVIOUS PUBLIC ART PROJECTS



CROMOS, Termini Station, Rome, Italy, 2000



SOLAR SPECTRUM ART, Fontana Library Rotunda, Fontana, CA, 2008.



SUN PAINTING, Lafayette, Library, Lafayette, CA, 2010

SCULPTING SUNLIGHT



WORKING IN SCALE MODELS

[The artist] always uses architectural scale models to create his solar art. His hands-on models allow him to play with sunlight, miniature prisms, and form in endless iterations. Eventually the muse whispers in his ear, and the installation appears. Spectrum sunlight scales up beautifully, so the real thing always far exceeds the beauty of the model.



HEALING LIGHT: the model



The installation at Eisenhower Luci Curci Cancer Center, Rancho Mirage, California.

RESPONSES TO THE SOLAR SPECTRUM ART IN THE HOSPITAL

"This work by [the artist] is integrated into our life here at the Cancer Center ..."
Actually I'm a cancer patient,....Presently not in treatment, presently doing very well. It was an extremely overwhelming experience.... I was *completely unaware* of the fact that when I needed to [quiet the fearful chatter from my cancer] that I came down to the lobby and I sat looking at the spectrum. I'm just looking at something that is beautiful, and in its beauty - it is mindless, it is whatever I need it to be at that moment, Wow, I guess that's why it worked for me."

Alison Mayer Sachs, MSW, Director – Cancer Support Services, Eisenhower Luci Curci Cancer Center

"[The artist's Solar Spectrum Art] takes you out of yourself. It takes you into another sphere, and you realize there are things bigger than you are - and that is really helpful in the healing process."

Sandy Diskin, Recovering Cancer Patient

RFP# PLT4-S-809-B Manchester Place Station