



Silver Spring

CAT Meeting #2
May 8, 2018



Welcome



Ground Rules for a Successful Meeting

- Everyone is treated courteously and with respect – no rude comments please
- Take turns, talk one at a time, and limit side conversations
- Everyone should feel welcome to participate
- Differing opinions are welcome
- Start on time; respect everyone's time
- General public may attend the CAT meetings and can offer questions or comments during the last 15 minutes of every meeting.



Introductions of Key Staff and Stakeholders

Silver Spring

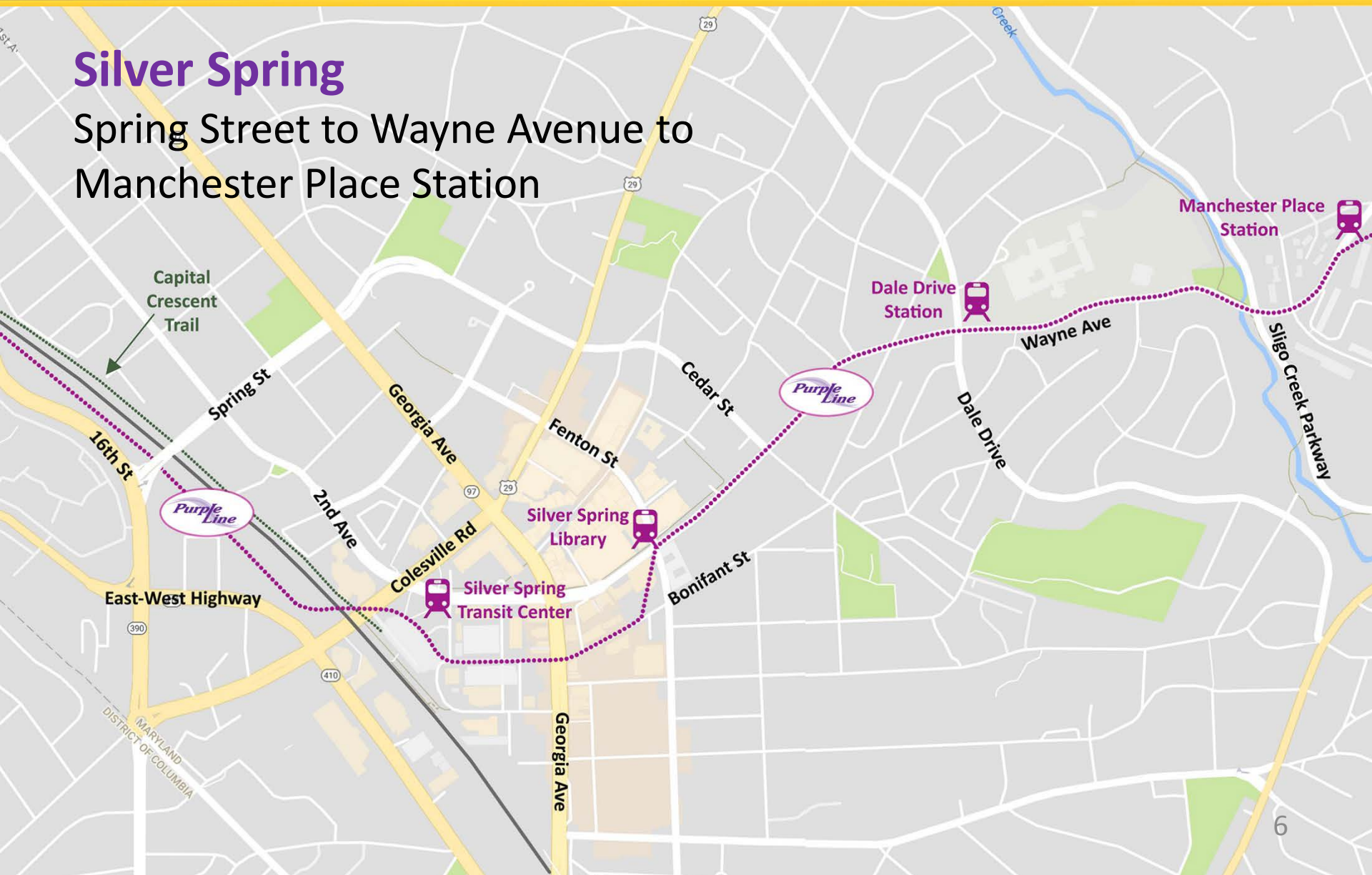
Spring Street to Wayne Avenue to Manchester Place Station
May 8, 2018

Presented by:

Jim Jewell – PLTC Area 1 Manager

Silver Spring

Spring Street to Wayne Avenue to
Manchester Place Station



Completed Construction Work

- Geotechnical investigations
- Site preparation
- 16th Street Plaza
 - Fencing in place
 - Preparing for Demolition
 - Post Office to move in July

Overall 6-month look ahead

- Overhead utility work
- Underground utility work
- Bonifant West closure
- Begin foundation construction for the bridges over Colesville Rd.
- Beginning work on Silver Spring Transit Center
- Beginning work on Silver Spring International Middle School
- Sligo Creek Park

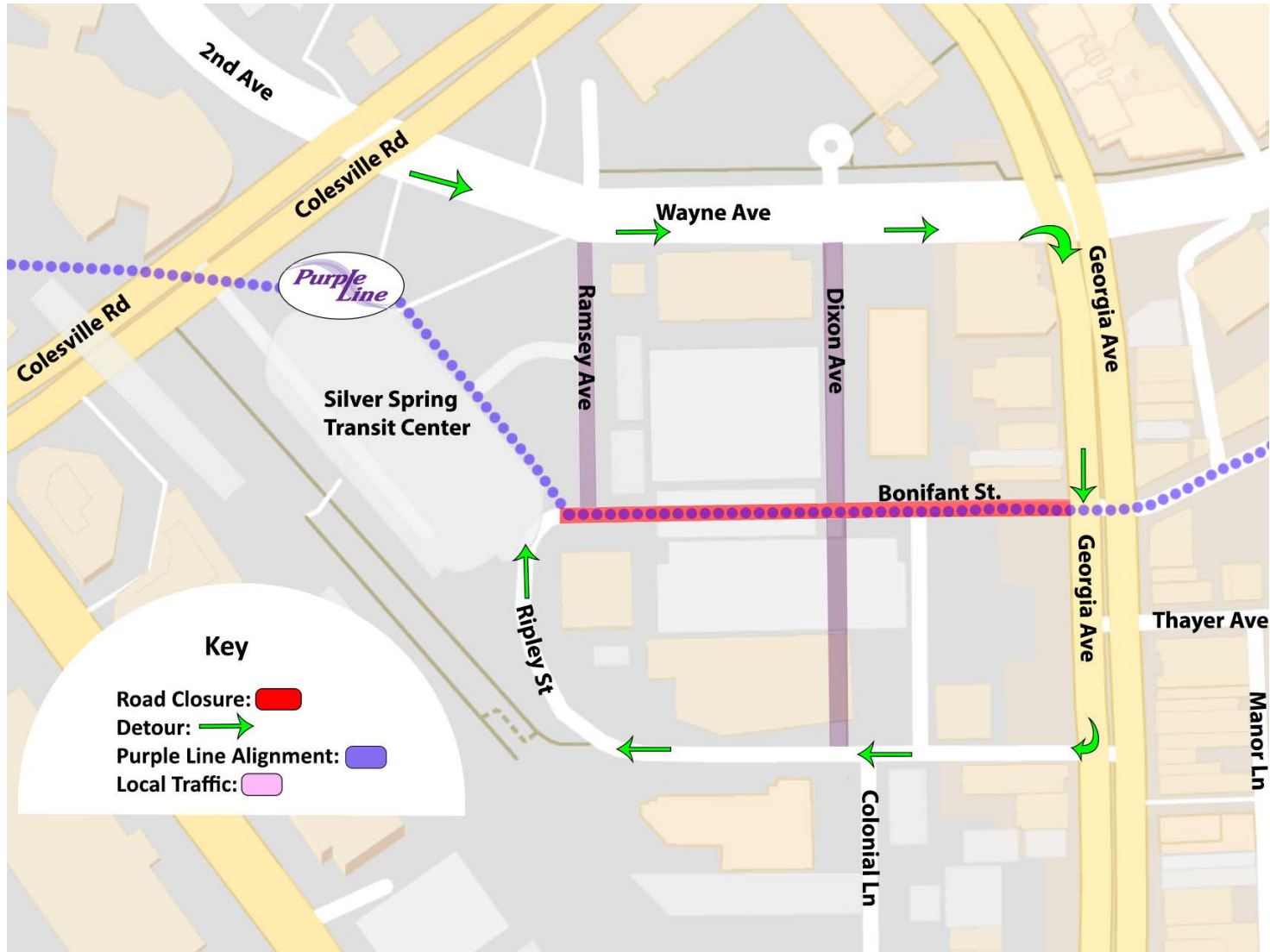
Schedule dependent on ongoing right of way acquisition negotiation

Utility work

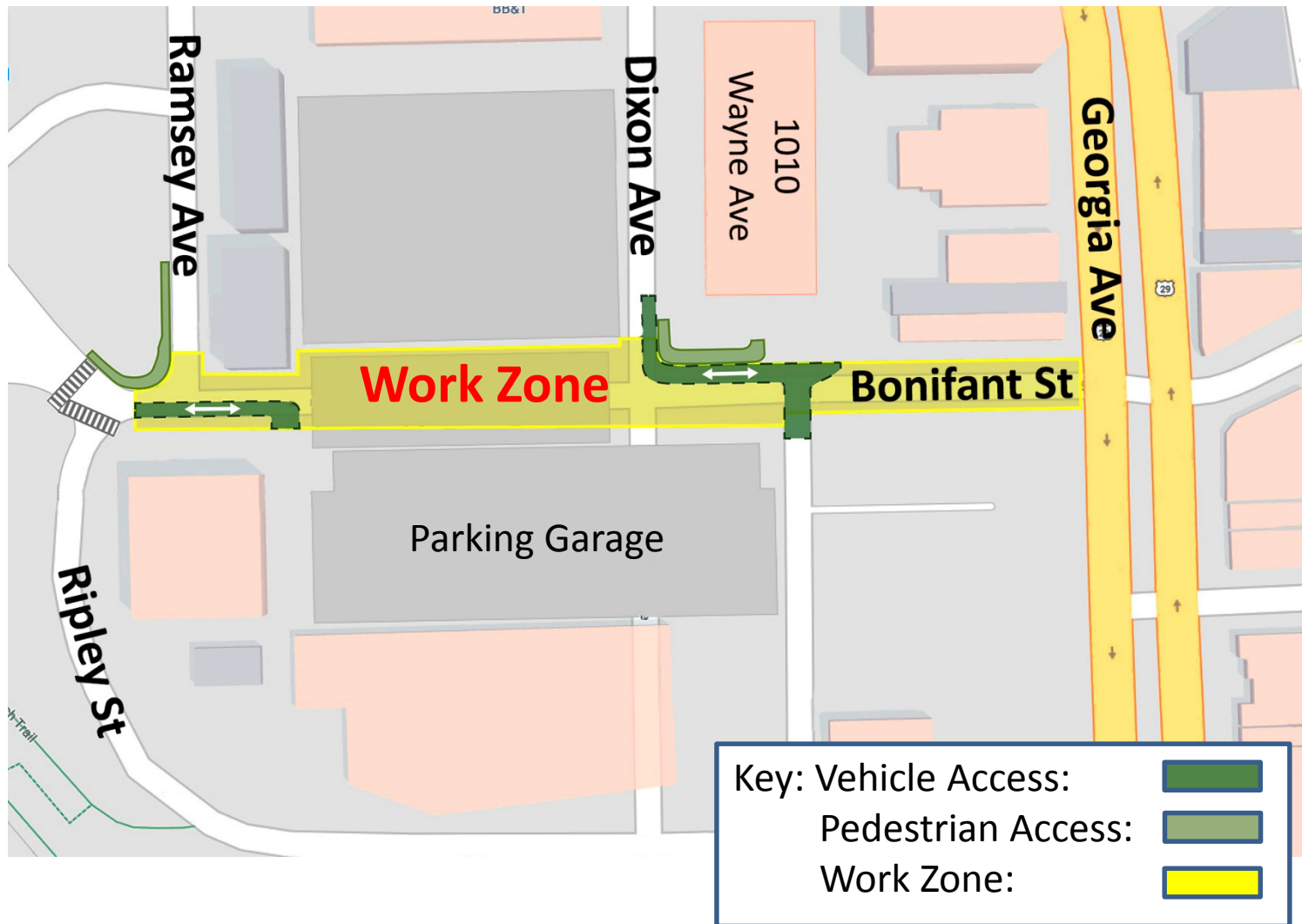
- Install new utility poles
- Move overhead lines after poles are installed
- Coordinate localized work zones with lane closures
- Underground utilities will follow overhead work
- Utility work will take place in the entire area, including Bonifant Street and Wayne Avenue
- Utility companies will notify of any service interruptions
- All efforts will be made to minimize disruptions



West Bonifant Street closure – Fall 2018



West Bonifant Street closure phase 1 – Fall 2018



Silver Spring Transit Center

- Establish work zone and temporary pedestrian plan
- Start foundations for LRT and CCT bridges over Colesville Rd.
- **Summer/Fall 2018**



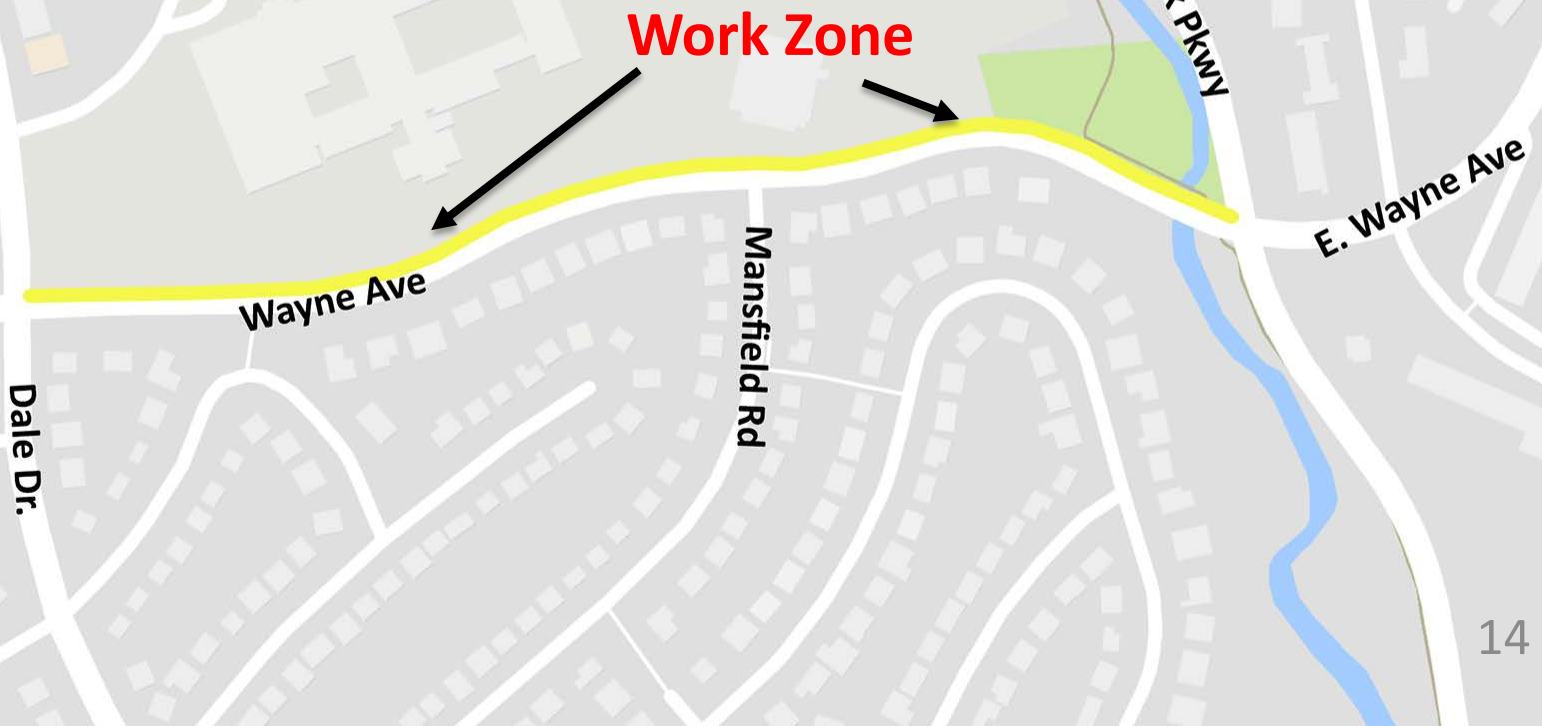
Wayne Ave

- Overhead utility relocation
- Begin drainage work
- **Summer 2018**



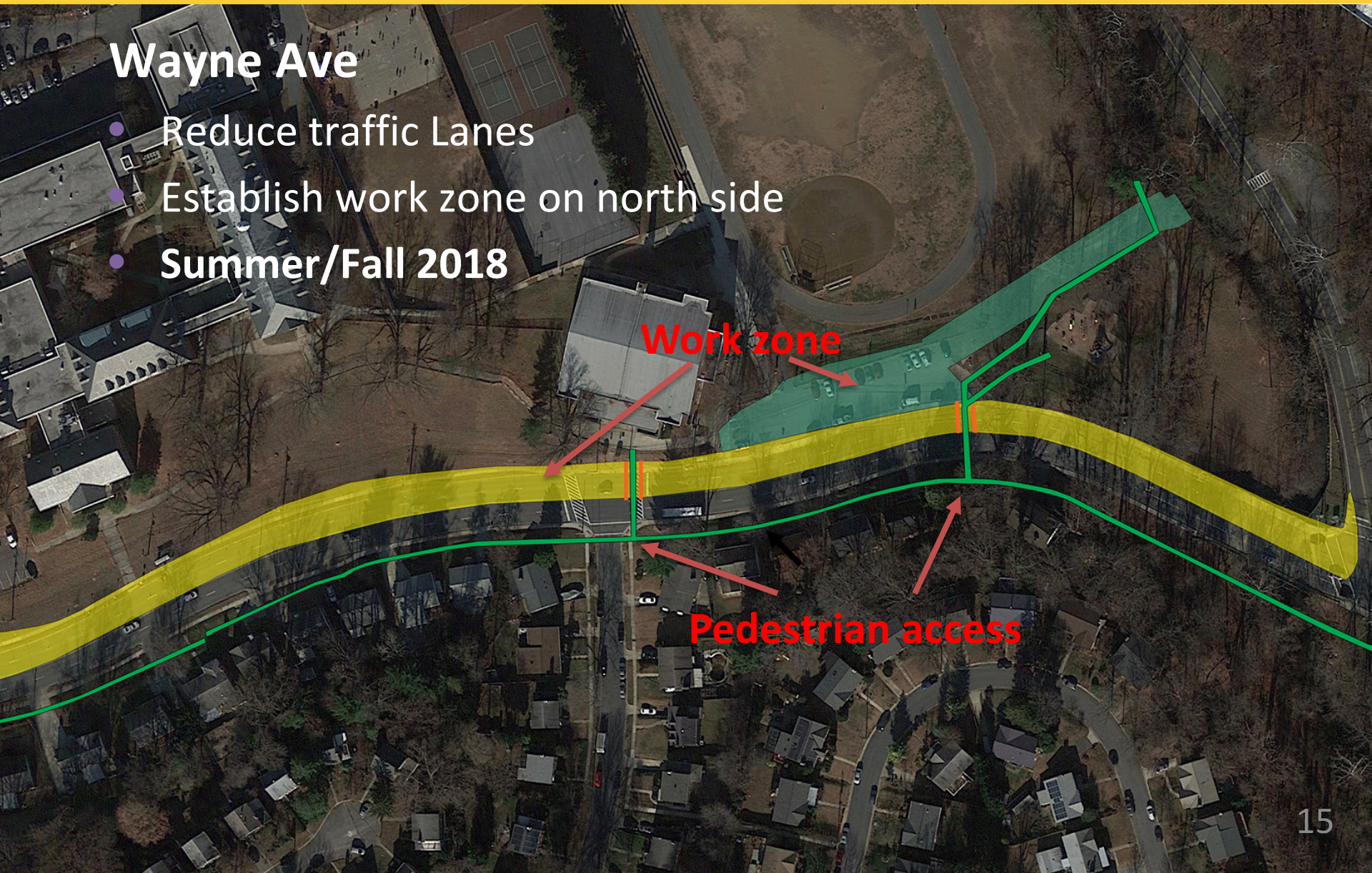
Wayne Ave

- Reduce traffic Lanes to two lanes
- Establish work zone on north side for utility work, drainage, school parking and access.
- **Summer/Fall 2018**



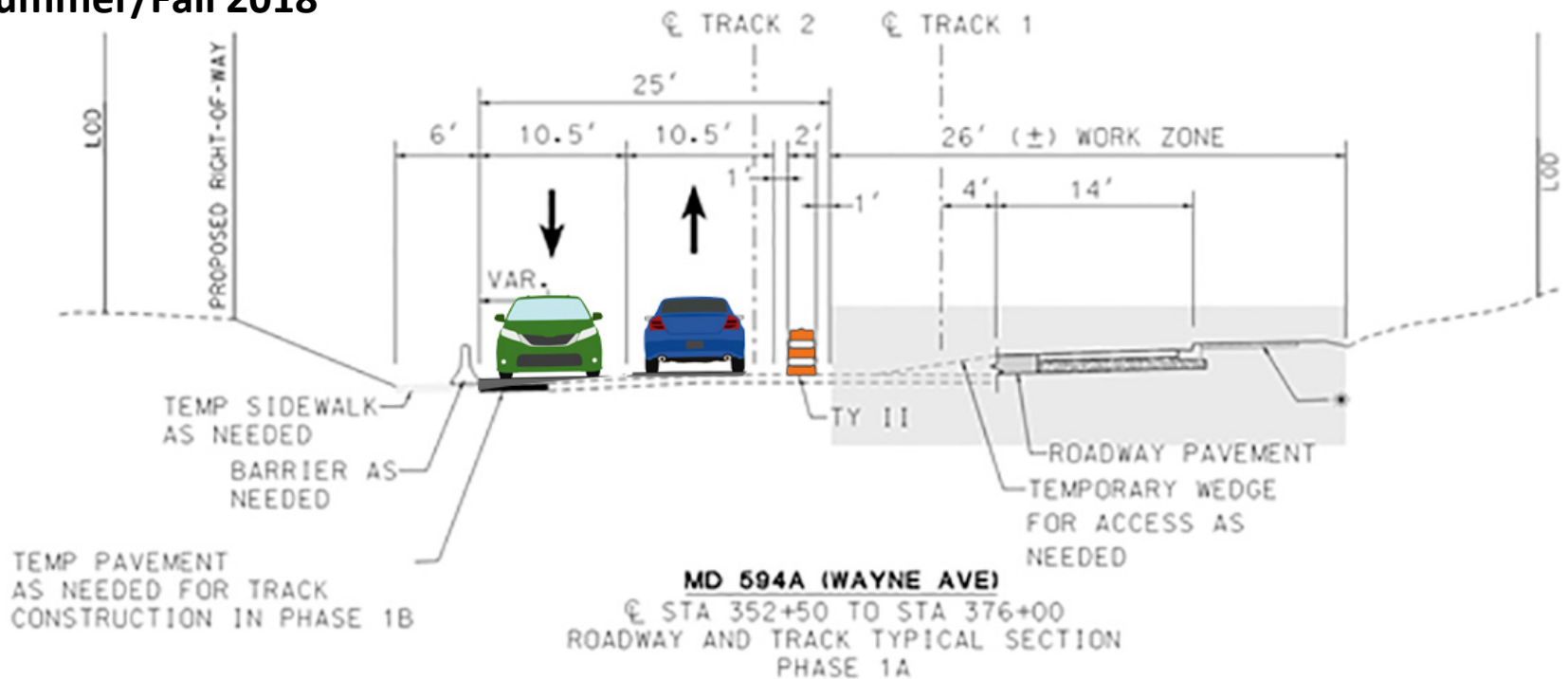
Wayne Ave

- Reduce traffic Lanes
- Establish work zone on north side
- Summer/Fall 2018



Wayne Ave

Phase 1A
Summer/Fall 2018



Silver Spring International Middle School

- Begin work at SSIMS – Summer/Fall 2018

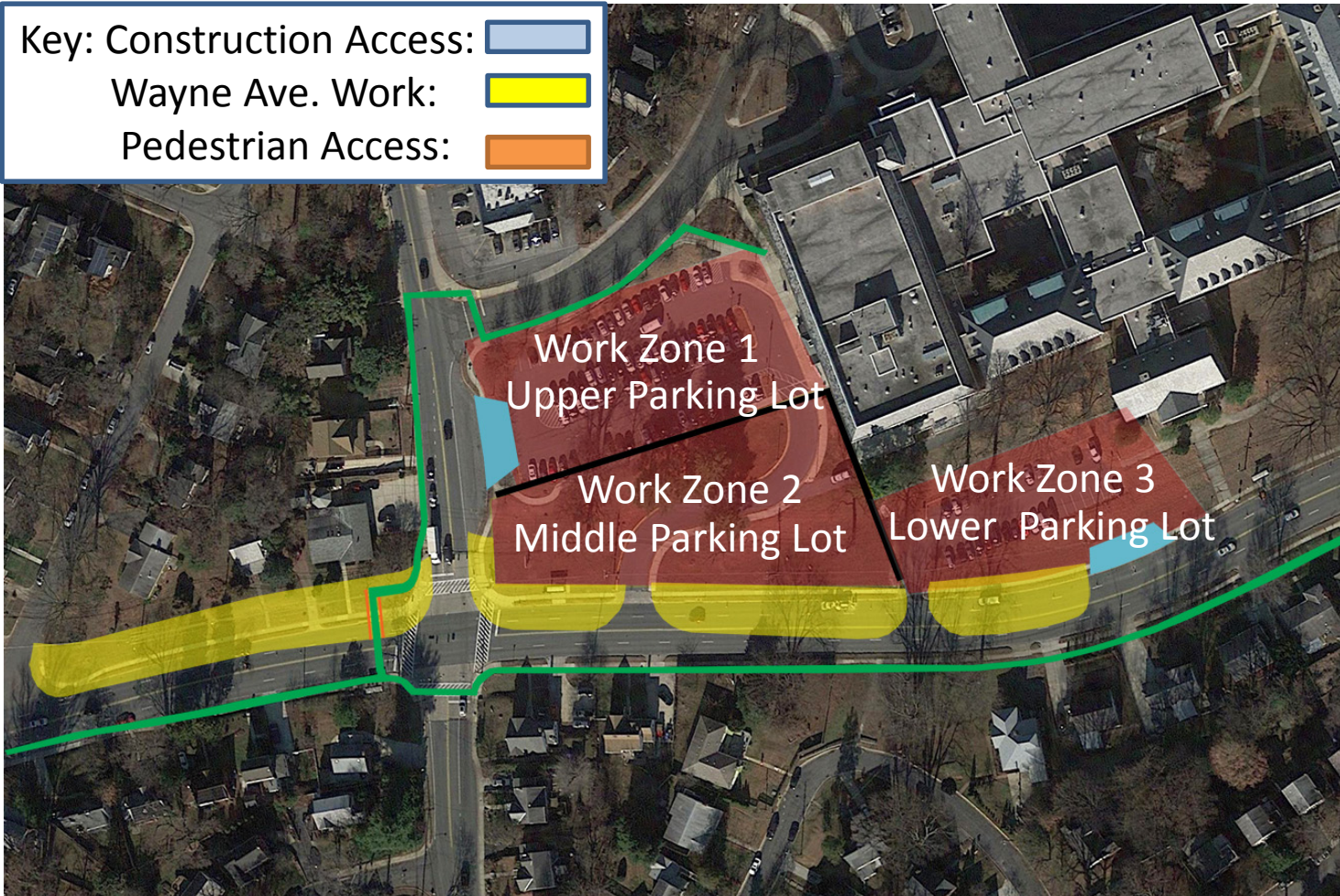
Key: Construction Access:



Wayne Ave. Work:

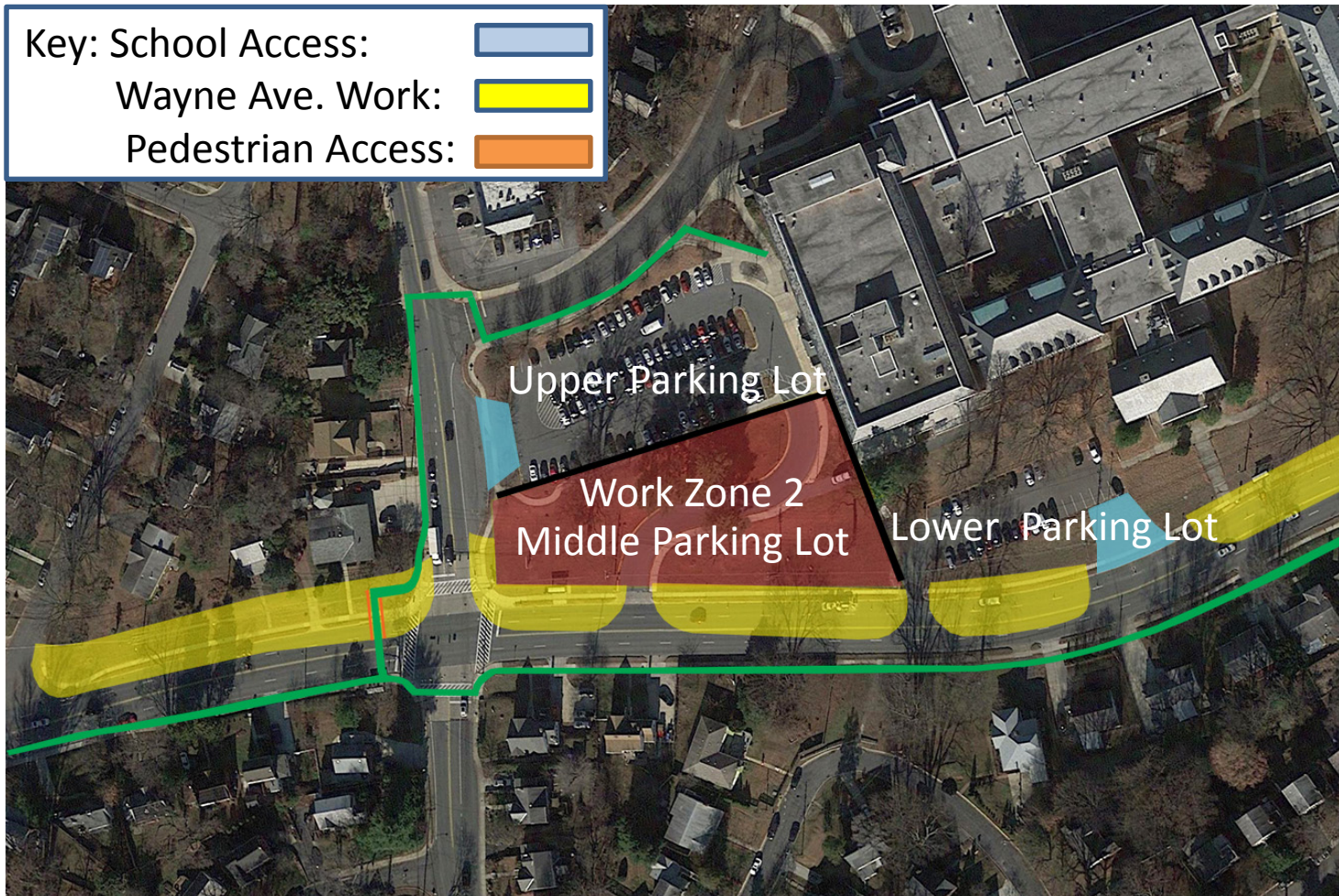


Pedestrian Access:






Silver Spring International Middle School

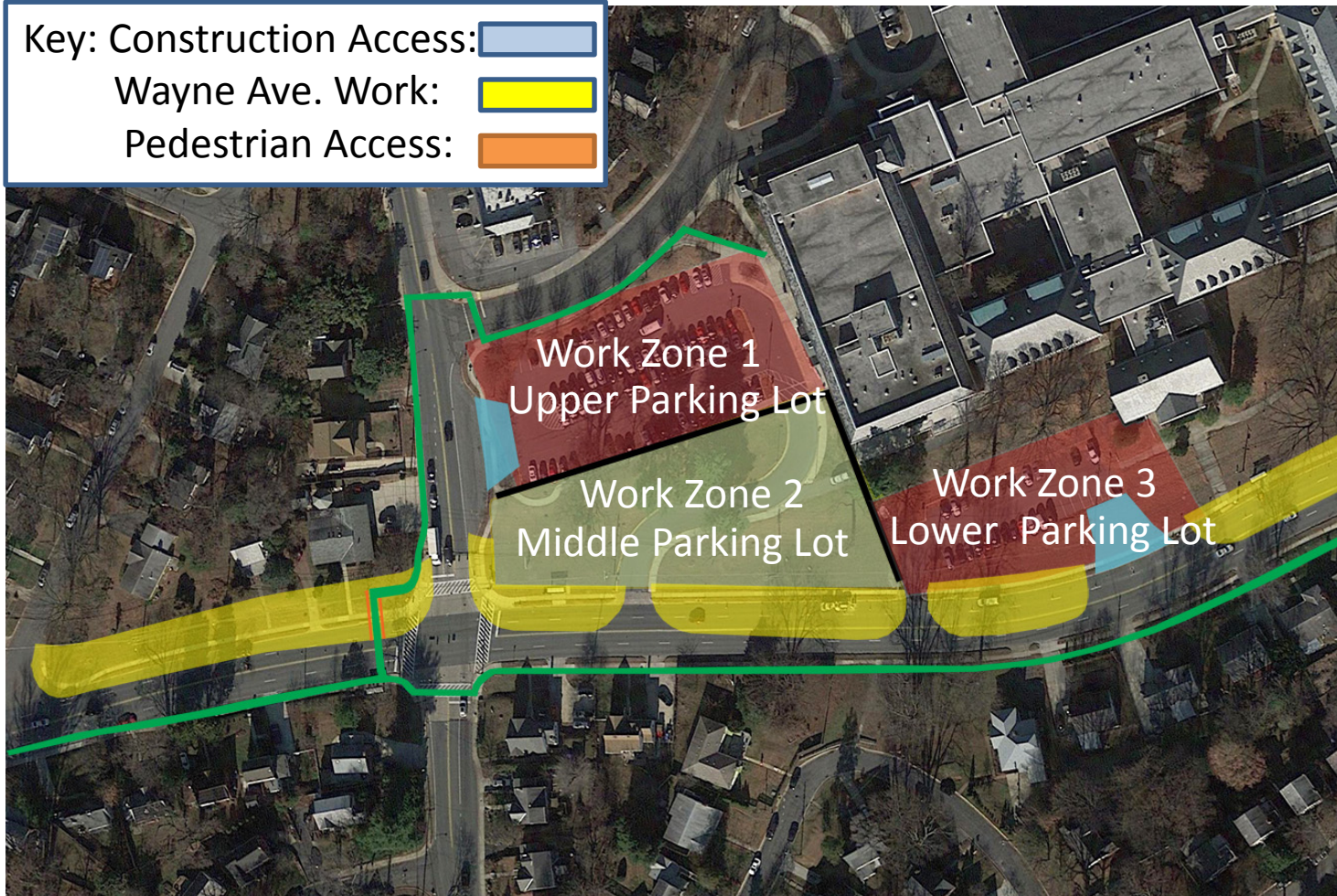
- School Year 2018



Silver Spring International Middle School

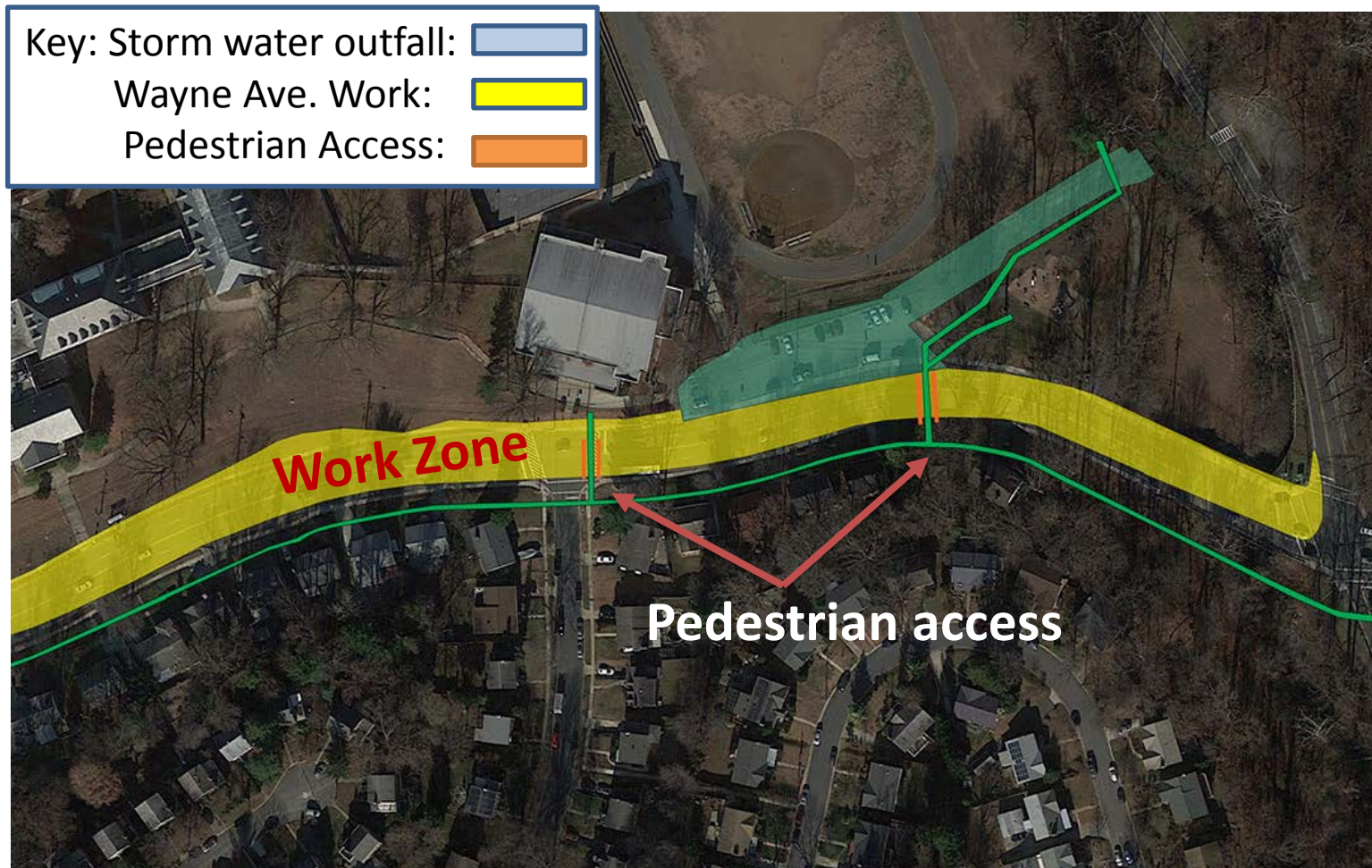
- Summer 2019

Key: Construction Access: 
Wayne Ave. Work: 
Pedestrian Access: 



Silver Spring International Middle School

- Summer 2018 - 2019



Pedestrian safety

- Pedestrian detours will be clearly signed
- When closures occur, alternate access will be provided
- Pedestrian access will be maintained to businesses and residents
- Work zones will be marked
- Pedestrians are urged to obey construction signage and keep out of work zones



Business Outreach

- Meeting with Bonifant Business and Silver Spring Urban District on regular basis
- PLTC to sponsor Taste of Fenton Village event
- Work with businesses impacted by construction on an individual basis
- Vehicle and pedestrian access to all businesses will be maintained during construction
- Work with businesses to make sure deliveries are accommodated during construction
- Provide open for business signage where appropriate
- Outreach efforts are coordinated in English and Spanish as needed

Transit coordination

Purple Line team is working with the counties and has met with agencies operating:

- MetroBus
- RideOn (Montgomery Co)
- TheBus (Prince George's Co)
- The Shuttle (UMD)

Coordination could include

- Bus stop locations
- Route modifications



Construction Work Hours

- Standard work week is 40 hours
- Make up / maintenance day will be Saturday
- Typical day shift: 7 AM – 5 PM
- Typical night shift: 8 PM – 4:30 AM
- Typical traffic lane closure: 9 AM – 3 PM

Stay up to date on Purple Line progress

- Sign up for construction notices at Purplelinemd.com
- For construction-related questions and concerns, contact PLTP:
 - Email at: outreach@pltcllc.com
 - 24/7 hotline at **240-424-5325**
- For general project questions and comments, contact MTA public outreach:
 - Email at: outreach@purplelinemd.com
 - Call: **443-451-3706** or **443-451-3705 (Español)**