



Riverdale & Glenridge/New Carrollton

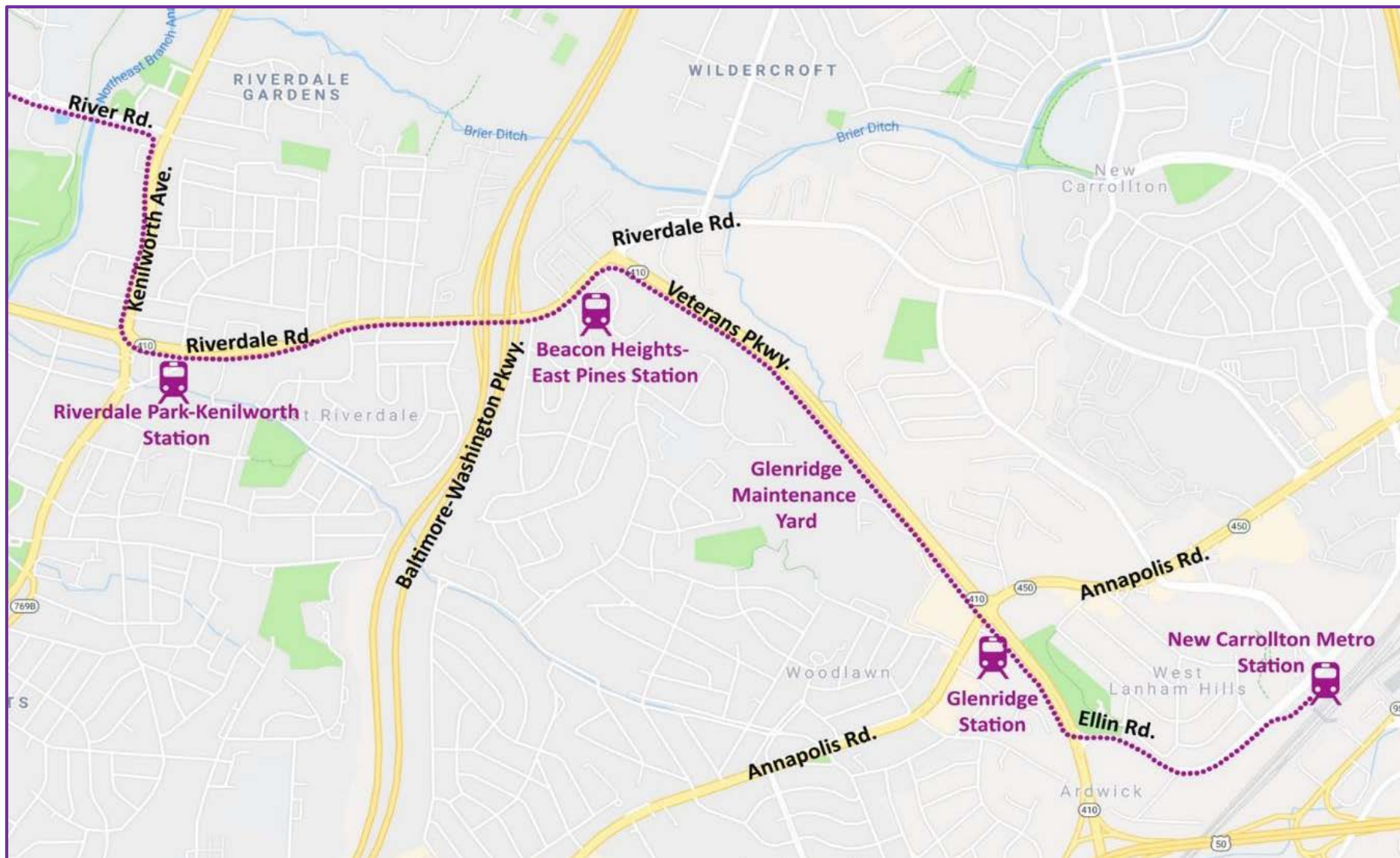
CAT Meeting #7

-December 15, 2020-

RIVERDALE & GLENRIDGE/NEW CARROLLTON

Stations in this segment:

- Riverdale Park-Kenilworth
- Beacon Heights-East Pines
- Glenridge
- New Carrollton Metro



MEETING OVERVIEW



- **Introduction**
- **Project Update**
- **MDOT MTA Managed Construction**
- **Construction Reminders**
- **Art-in-Transit Update**
- **Questions**

INTRODUCTION

Gary Witherspoon

MDOT MTA Public Outreach & Communications Deputy Project Director

Matthew Pollack, PE, PMP

Executive Director, Transit Development and Delivery

Vernon G. Hartsock, PMP

Acting Project Director

Matthew Pollack, Executive Director

- A Professional Engineer (PE) with over 30 years of light and heavy rail experience
- Raised in Montgomery County and currently living in Prince George's County

Vernon Hartsock, Acting Project Director

- A Project Management Professional (PMP) with 28 years of MDOT MTA experience, rising to the rank of Chief Engineer before joining the Purple Line
- Oversaw the design and construction of numerous MDOT MTA capital projects, including Light Rail Double Track and Metro Supervisory Control and Data Acquisition (SCADA) system.
- Raised in Baltimore and lived on 33rd Street, just a block from the former home of Memorial Stadium.

PROJECT UPDATE

PURPLE LINE PROJECT UPDATE

*Purple
Line*



Larry Hogan
Governor
Boyd K. Rutherford
Lt. Governor
Gregory Slater
Secretary

FOR IMMEDIATE RELEASE:
November 24, 2020

Contact:
[Erin Henson](#), MDOT, 410-865-1025
[John Undeland](#), PLTP, 703-785-3461

**MDOT, Meridiam, Star America and Fluor Reach \$250 Million Agreement
to Settle All Purple Line Claims and Terminate Purple Line Litigation**

Formal Settlement Pending BPW Review

If the settlement agreement is approved by the Board of Public Works:

- Purple Line Transit Partners (PLTP) will remain as the Concessionaire.
- PLTP will initiate a solicitation for a new design-build contractor.
- MDOT and MTA will continue to manage construction during the interim period.
- PLTP will manage construction completion, start-up and operations.
- Community collaboration will remain critical to project success.

MDOT MTA MANAGED CONSTRUCTION



October – December 2020, MDOT MTA and the contractors have been working together to continue:

- Manufacturing light rail vehicles and other key project components, including electrical components, and special trackwork;
- Completing final construction designs for stormwater management and intelligent transportation systems across the alignment.

Starting with a select few locations, MDOT MTA is directing the resumption of on-site construction along the alignment. As contractors come online, the volume of work will increase.

- Pessoa Construction Company – Water and sewer utility relocations and concrete work
- Henkels & McCoy – Gas and overhead power relocations
- M. C. Dean – Systems and electrical work
- Empire Landscaping – Erosion and sediment control maintenance
- Traffic Engineering Services – Maintenance of traffic support
- Aves Construction – Water main relocations
- Interlock Steelworkers – Steel installation
- Priority Construction – Wall construction

PLANNED FUTURE PRIORITIES IN CATS AREA

- Near-Term (3-6 Months)
 - Utility relocations on Kenilworth Avenue, Riverdale Road, Veterans Parkway, Annapolis Road, and Ellin Road
 - Construction of New Carrollton parking lot
 - Complete Traction Power Substation (TPSS) at Patterson Avenue
 - Wall construction at the Glenridge OMF
 - Glenridge OMF utility work, grading and storm drainage



PLANNED FUTURE PRIORITIES IN CATS AREA



- Longer Term (6-12 Months)
 - Wall construction continues
 - Continue utility relocations throughout CAT area
 - Storm drain / sidewalk construction on Kenilworth Avenue
 - Construction of Riverdale Station aerial deck
 - Glenridge Mall bridge construction
 - BW Parkway bridge completion
 - Complete grading from Riverdale Road to Ellin Road and continue test track construction



CONSTRUCTION REMINDERS

MAINTENANCE OF TRAFFIC – WHAT TO EXPECT

- Existing traffic patterns will change as work occurs, as needed
- Work may occur on both sides of the road and across roadways
- When a lane closure is required, a notice will be distributed via text and email (sign-up required through purplelinemd.com)
- Orange cones and barrels (temporary barricades) will be in place
- Flag-person, when required, will direct traffic
- Underground utility work may require temporary road plates



STAY UP-TO-DATE ON CONSTRUCTION PROGRESS



- Sign up for construction notices at purplelinemd.com
- For project questions and comments, contact MDOT MTA public outreach
 - Email: outreach@purplelinemd.com
 - Call: 443-451-3706 or 443-451-3705 (Para Español)

ART-IN-TRANSIT UPDATE

ART-IN-TRANSIT UPDATE

Purple
Line

- 18 of 22 art-in-transit contracts have been fully executed
- About half of the fully executed contracts are in Prince George's County, for the stations listed below:
 - Takoma Langley
 - Riggs Road
 - Adelphi Road – UMGC – UMD
 - Campus Drive – UMD
 - Balt. Ave. – College Park – UMD
 - College Park Metro – UMD
 - Riverdale Park North – UMD
 - New Carrollton

Selected Artist: **Vicki Scuri**



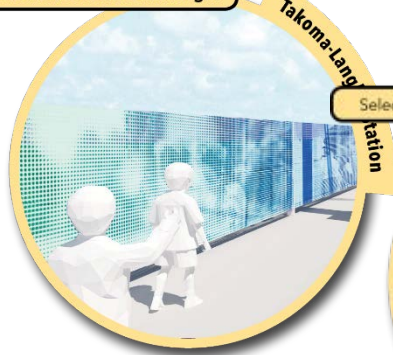
Selected Artist: **David Franklin**



Selected Artist: **Lynn Basa**



Selected Artist: **Volkan Alkanoglu**



Selected Artist: **Linda DePalma**



Selected Artists: **Norman Lee & Shane Allbritton**



Selected Artist: **Murray Legge**



Selected Artist: **Walter Hood**



QUESTIONS

QUESTIONS SUBMITTED PRIOR TO MEETING



- Do you expect any portions of the project design to change now under the settlement agreement?
- Is it possible to accelerate completion of certain infrastructure in and around the project that is disruptive to the community?

QUESTIONS SUBMITTED PRIOR TO MEETING



- What is the prospect for seeking additional federal assistance, with the upcoming change in executive leadership at the federal level?
- What new general timelines can we expect for completion of various aspects of the project?

ADDITIONAL QUESTIONS?



EVEN MORE QUESTIONS?



Please email your questions to outreach@purplelinemd.com by December 22, to be included in the Q&R that will be posted online.



**THANK YOU
FOR ATTENDING!!**

Riverdale & Glenridge/New Carrollton

CAT Meeting #7

-December 15, 2020-