



Greater Lyttonsville/Woodside

CAT Meeting #8

June 29, 2021

MEETING OVERVIEW



- Introduction and Ground Rules
- Project Status
- Light Rail Vehicle
- Construction Update
- Stay Up-To-Date
- Questions

Matthew Pollack, PE, PMP

Executive Director, Transit Development and Delivery

Vernon G. Hartsock, PMP

Project Director

Anita Rodgers

Acting Deputy Project Director, Contracting Officer

Gary Witherspoon

Deputy Project Director Public Outreach & Communications

GROUND RULES

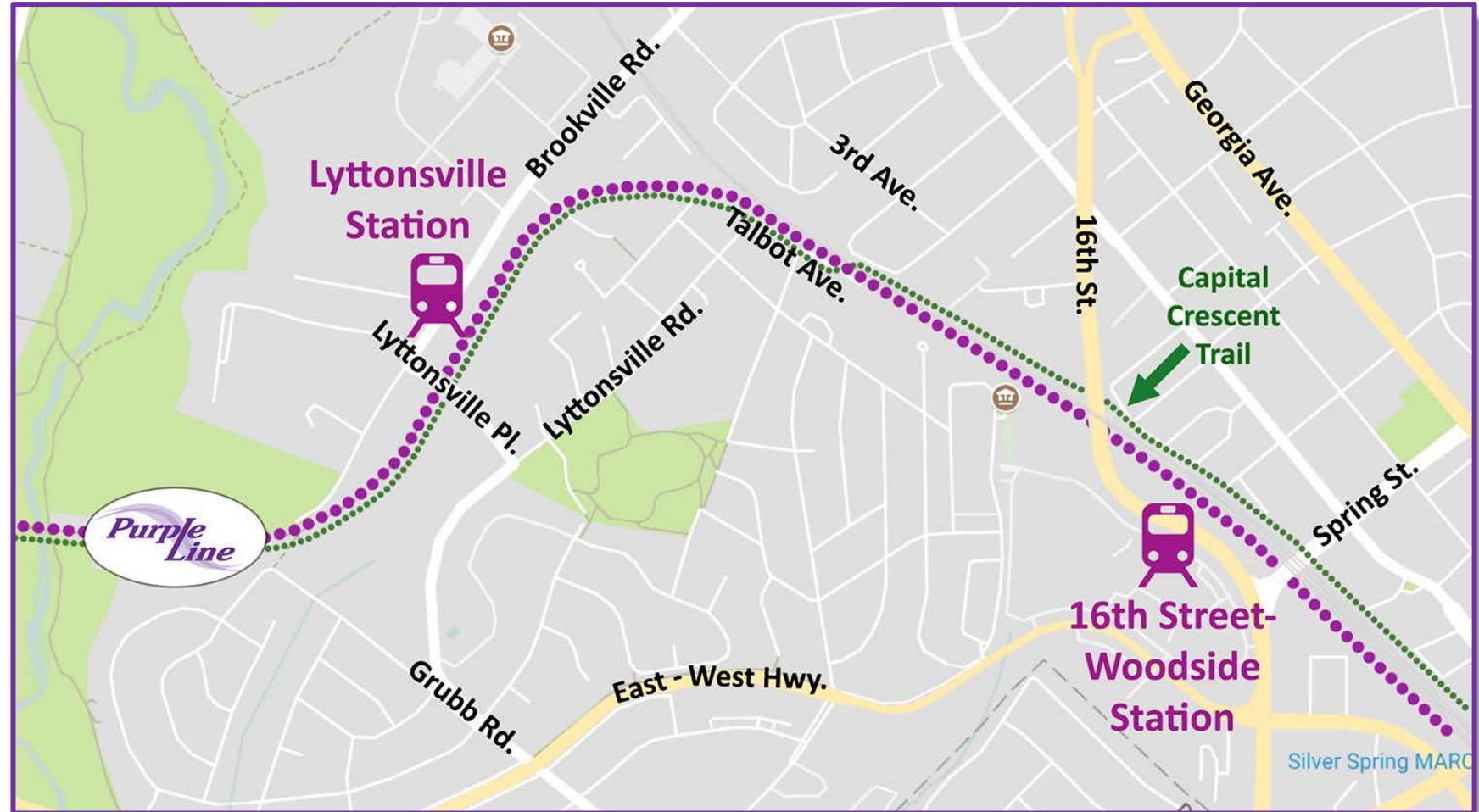
- Everyone is treated courteously and with respect – no rude comments please
- Everyone should feel welcome to participate
- Please hold your questions until the end of the meeting and take turns, one at a time, wait to be called on
 - To ask a question, please “raise your hand”
- We will accept questions and comments from CAT members first then open it to the general public

GREATER LYTTONSVILLE/WOODSIDE CAT SEGMENT



Stations in this segment:

- Lyttonsville
- 16th Street-Woodside



- Settlement agreement was approved by the Board of Public Works and Purple Line Transit Partners (PLTP) has started the procurement process to re-solicit the project for a new design-build contractor
- MDOT MTA (jointly with PLTP) will have final approval over selected replacement design-build contractor
- MDOT MTA has continued to manage and advance construction during this interim period

PLTP's PROCUREMENT TIMELINE

PLTP's key milestones for the procurement process include:

Milestone	Estimated Timeframe
✓ Issued Request for Qualifications	January 8, 2021
✓ Received Statements of Qualifications	February 18
✓ Short-List Teams <ul style="list-style-type: none">- Halmar International- Maryland Transit Solutions (comprised of Dragados USA Inc. and OHL USA Inc.)- Tutor-Perini/Lunda, a Joint Venture	March 3
✓ Issued Request for Proposals	March 8
Select Contractor	Summer 2021
Board of Public Works Review/Approval	Fall 2021

LIGHT RAIL VEHICLES

- MDOT MTA has been working directly with CAF to progress production vehicles
 - All 130 car shells are fabricated
 - 94 car shells have been painted
 - 82 are in Elmira, NY for assembly
 - 5 are in transit from Spain to Elmira
 - 7 are awaiting shipment from Spain to Elmira



WORK CONDUCTED OVER THE PAST 6 MONTHS



- Primary focus has been on underground utility relocations
 - 5 % complete in the area
- Completed Rock Creek pedestrian bridge substructure
- Constructed retaining wall at Falkland Apartments and restored the parking lot
- Began tree clearing week of June 14 between 16th St. and Spring St. adjacent to CSX tracks
- Began Pepco overhead utility relocations at Talbot Ave.

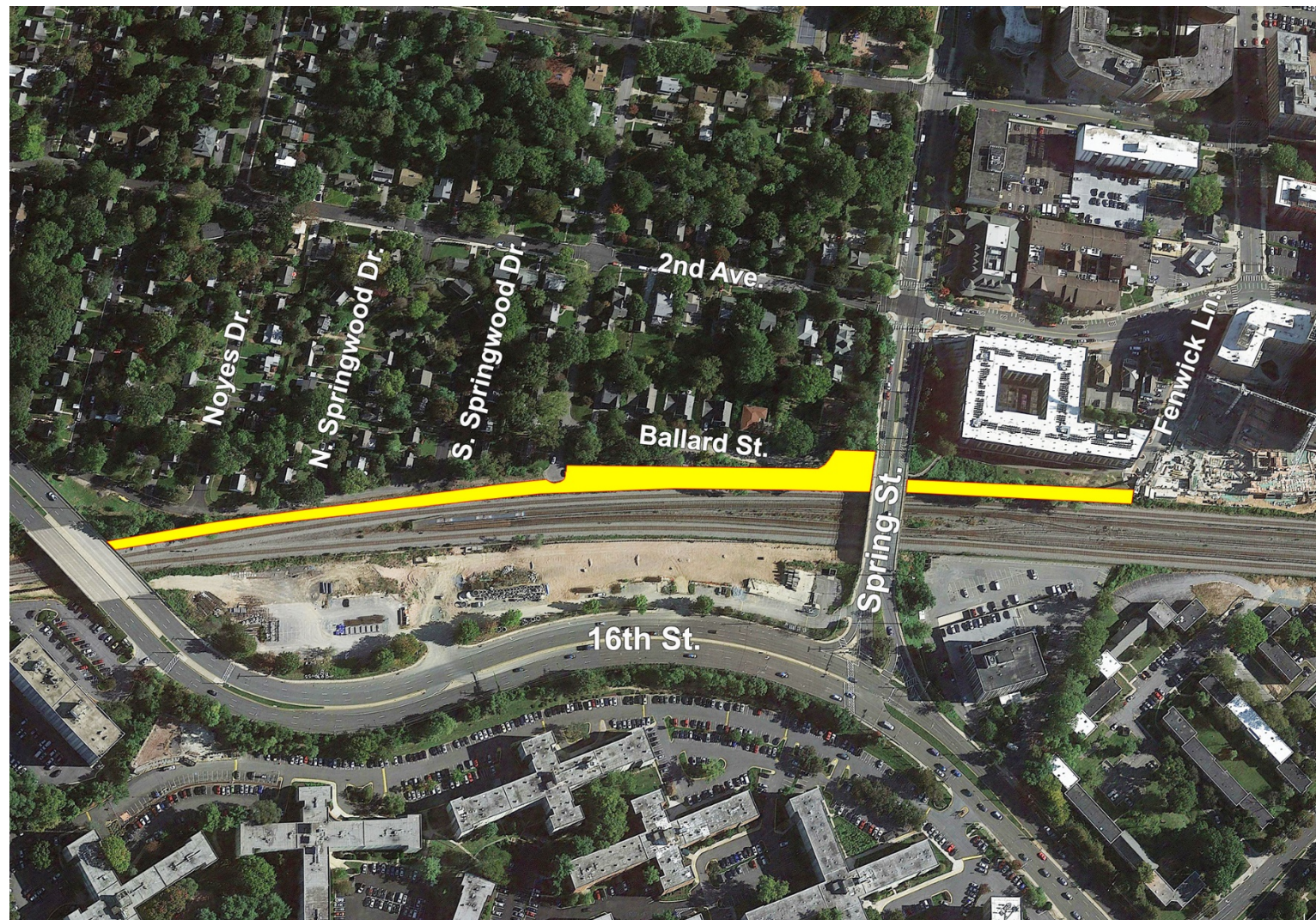
CONSTRUCTION PROGRESS PICTURES

Restored Falkland
Apartments parking lot



CONSTRUCTION PROGRESS PICTURES

Tree clearing work zone



CONSTRUCTION PROGRESS PICTURES

Rock Creek concrete
placement for new
pedestrian bridge



6-MONTH LOOK AHEAD

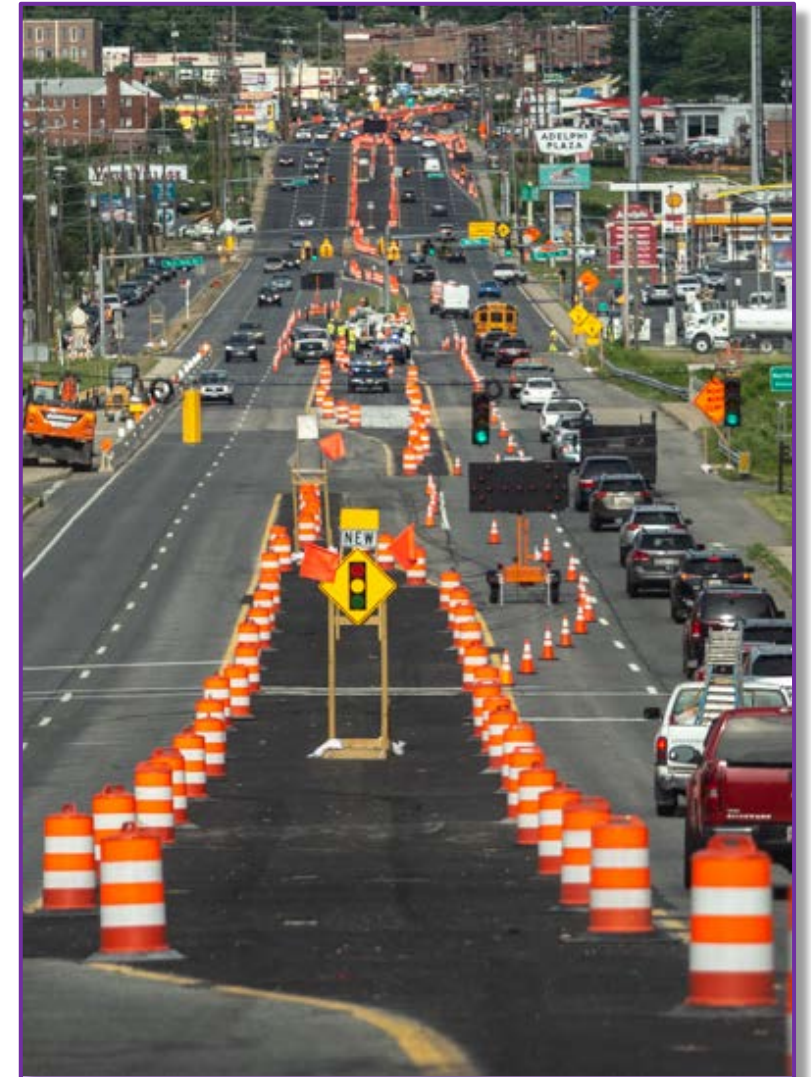
- Continue underground utility relocations
 - Water line along 3rd Ave./Ballard St., Bradford Place, and 16th St.
 - Sewer at Spring Center and 3rd Ave./Ballard St.
 - This is time sensitive work as it will run under WMATA/CSX tracks
 - Work will occur 24/7 for approximately a week
 - Complete Pepco overhead crossing at Talbot Ave.
- Continue tree clearing between 16th St. and Spring St. adjacent to CSX tracks
 - Clearing should be finished in July
- Graffiti removal on Lyttonsville Place Bridge by end of August

CONSTRUCTION WORK HOURS

- Typical day shift: 7 a.m. – 5 p.m.
- Typical night shift: 7 p.m. – 4:30 a.m.
- Make-up / maintenance day will be Saturdays, as required
- Purplelinemd.com hosts notifications for all work zones and hours in which work will be conducted as well as any lane closures needed

MAINTENANCE OF TRAFFIC – WHAT TO EXPECT

- Existing traffic patterns will change as work occurs, as needed
- Work may occur on both sides of the road and across roadways
- When a lane closure is required, a notice will be distributed via text and email (sign-up required through purplelinemd.com)
- Orange cones and barrels (temporary barricades) will be in place
- Flag-person, when required, will direct traffic
- Underground utility work may require temporary road plates



BUSINESS ENGAGEMENT TEAM



- The MDOT MTA has a Business Engagement Team in place to foster relationships with those businesses along the alignment that may be impacted.
- The team consists of:

Lesli Leath

Business Relationship Manager

lesli.leath@purplelinemd.com

1-240-695-9269

Marlene Veras

Business Engagement Officer for
Prince George's County

marlene.veras@purplelinemd.com

1-443-802-1608

Minh Diep

Business Engagement Officer for
Montgomery County

minh.diep@purplelinemd.com

1-551-206-5889

STAY UP-TO-DATE



- Sign up for construction notices at purplelinemd.com to receive construction updates via email or text message
- Our outreach team is available to answer your questions and comments through email or phone:
 - outreach@purplelinemd.com
 - 443-451-3706 or 443-451-3705 (Para Español)
- Follow us on social media:



/MarylandPurpleLine



@PurpleLineMD

QUESTIONS?



QUESTIONS SUBMITTED PRIOR TO MEETING



- When will the CCT open?
- When will the Talbot Avenue Bridge be completed?
- What is the anticipated completion date of the project?
- Under the original contract, there were incentives for getting to opening; the concessionaire holding some of the financings for the project; two payments at key milestones; and the availability payments only starting as the project is open for public transit. Are those incentives remaining in place?



QUESTIONS?

*Purple
Line*

THANK YOU FOR YOUR PARTICIPATION!

Please email your questions to outreach@purplelinemd.com by July 6, to be included in the Q&R that will be posted online.