



# Riverdale/New Carrollton

CAT Meeting #9

June 9, 2022

# INTRODUCTIONS



**David Abrams**

Director of Communications

**James Mitchell**

Program Manager

**Jeanine Ferris**

Area 3 Manager

**Dwain Sanders**

Operations Manager

**Carla Julian**

Stakeholder Manager

# MEETING OVERVIEW

Staff Introduction

Project Update

Construction Overview

- Work Completed
- Progress Photos
- Upcoming Work

Questions & Answers

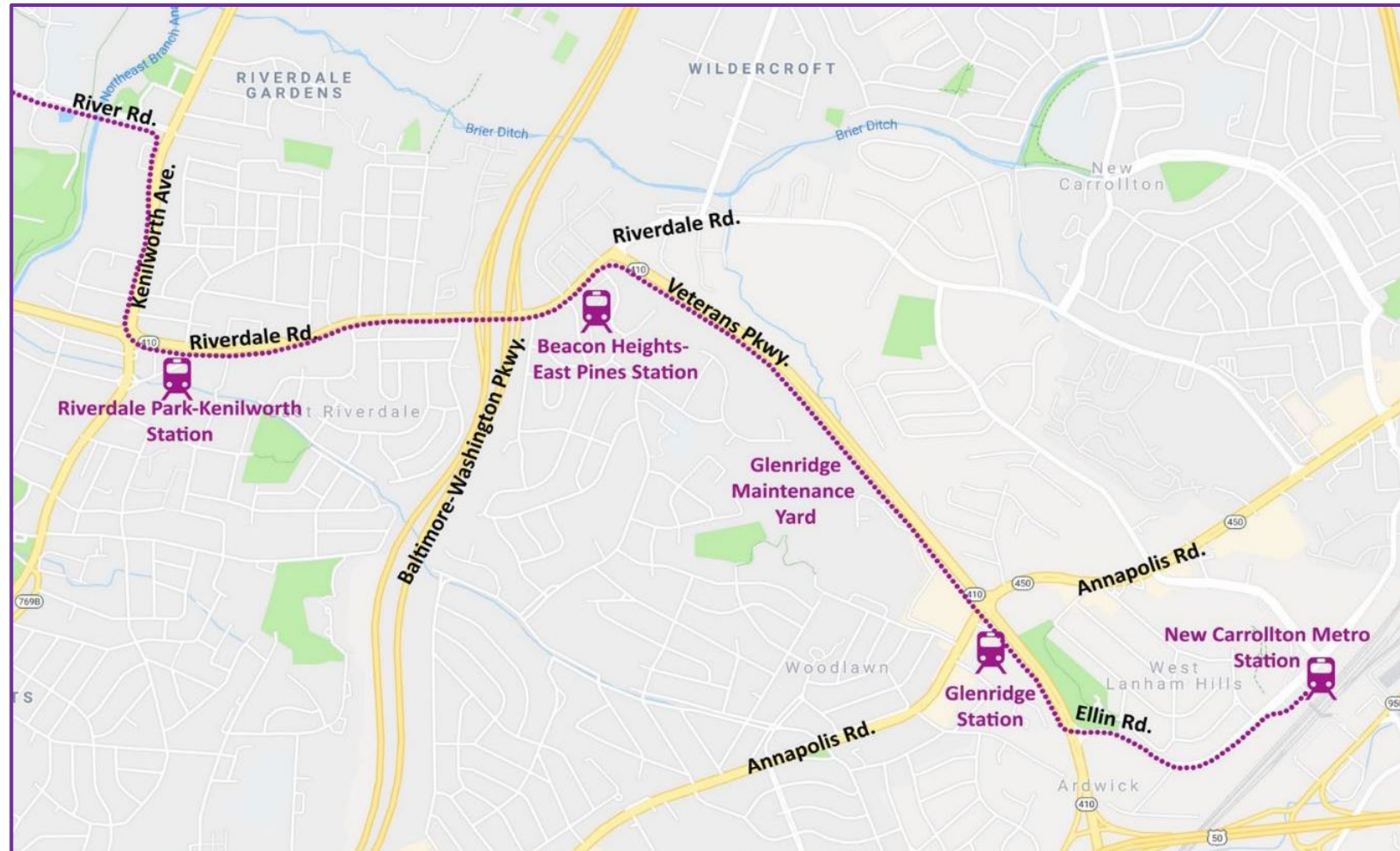


Riverdale Park – Kenilworth Station



## Stations in this segment:

- Riverdale Park-Kenilworth
- Beacon Heights-East Pines
- Glenridge
- New Carrollton Metro



# TYPICAL CENTER PLATFORM

## Station rendering:

- Beacon Heights-East Pines
- Glenridge





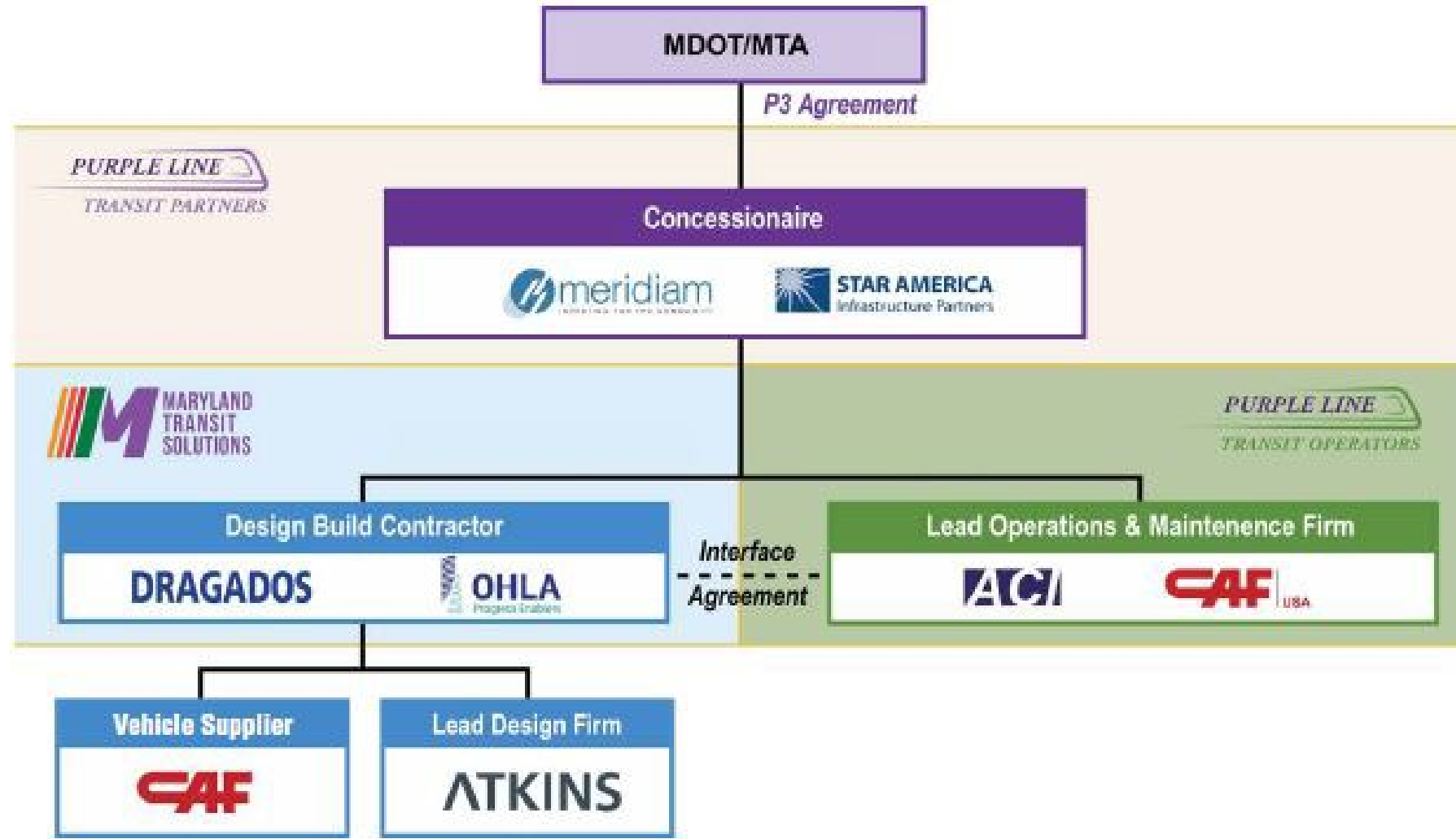
# NEW CARROLLTON METRO STATION



# NEW DESIGN BUILDER

- Modified contract unanimously approved by the Maryland Board of Public Works in January 2022
- Maryland Transit Solutions (MTS) signed as the new Design-Builder in April 2022
- Construction firms Dragados USA and OHL USA bring extensive experience with megaprojects, including the Los Angeles LAX Airport People Mover and the Long Island Railroad East Side Access project in New York
- Purple Line scheduled to begin service at the end of 2026
- Construction ramping up this summer

# DESIGN-BUILD ORGANIZATIONAL STRUCTURE





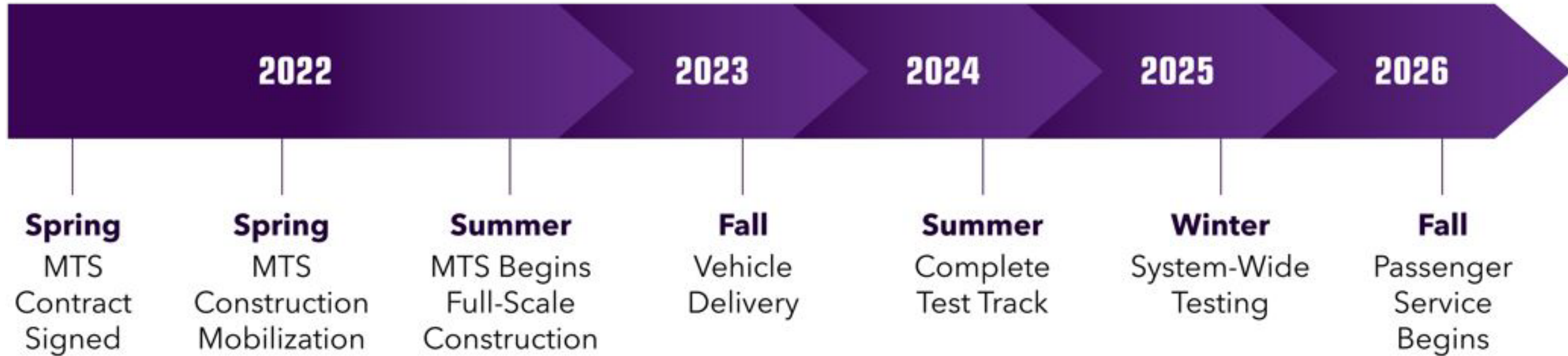
# PROJECT ACCOMPLISHMENTS



Over the last 18 months MDOT MTA advanced construction by progressing completion of:

- 77% of underground utility relocations
- 17 walls
- Startup and commissioning of the Glenridge Operations and Maintenance Facility

# PROJECT TIMELINE



# LIGHT RAIL VEHICLE (LRV)

- Light rail vehicle production continues, with 22 of 26 produced and 16 ready to ship
- Delivery to begin Fall 2023 to the Glenridge Operations and Maintenance Facility
- 80 seats available, 400 standing room capacity
- Low floor with wide doorways
- Flexible space and folding seats to allow for eight wheelchairs and bicycle storage





# WORK OVER THE PAST SIX MONTHS

## **Alignment-wide maintenance and upkeep**

- Pothole/roadway resurfacing on Ellin Road and River Road
- Erosion and sediment control
- Mowing/site cleanup



# WORK OVER THE PAST SIX MONTHS

## Kenilworth Avenue to Riverdale Road

- Continued underground and overhead utility relocations





# WORK OVER THE PAST SIX MONTHS

## Glenridge Operations and Maintenance Facility (OMF)

- Site grading and drainage
- Parking lot, sidewalk, curb and gutter work
- Completed connections to power, water, gas, and sewer to the building





# WORK OVER THE PAST SIX MONTHS

## Veterans Parkway (MD 410)

- Continued WSSC waterline relocation



# SIX-MONTH LOOK AHEAD

## **Kenilworth Avenue to Riverdale Road**

- Completion of underground utility relocations – water and sewer

## **Glenridge Operations and Maintenance Facility (OMF) work continues**

- Site grading and drainage
- Parking lot, sidewalk, curb, and gutter work
- Testing of the train wash and paint booth

## **Veterans Parkway**

- Completion of the WSSC waterline relocation by late fall 2022

## **Kenilworth Avenue to Riverdale Road**

- Continue utility relocations
- Begin storm drain installation
- Begin traffic signal work

## **Riverdale Park-Kenilworth Station**

- Begin aerial station deck work

## **Baltimore-Washington Parkway**

- Resume construction of retaining walls and embankments
- Begin storm drain installation



## **Riverdale Road**

- Continue utility relocations
- Begin storm drain installation
- Reconstruct sidewalk, curb, and gutters

## **Veterans Parkway**

- Begin stormwater management facility construction
- Begin installation of the Traction Power Substation

## **Glenridge Operations and Maintenance Facility (OMF)**

- Complete storm drain systems
- Install light rail vehicle tracks
- Begin installation of the Traction Power Substation

## Ellin Road

- Resume storm drain installation

## New Carrollton Station

- Begin Phase 1 of parking lot reconstruction with installation of lighting
- Continue utility relocations
- Begin installation of the Traction Power Substation

# MAINTENANCE OF TRAFFIC – WHAT TO EXPECT

- Existing traffic patterns will change as work occurs, as needed
- Work may occur on both sides of the road and across roadways
- When a lane closure is required, a notice will be distributed via text and email (sign-up required through [purplelinemd.com](http://purplelinemd.com))
- Orange cones and barrels (temporary barricades) will be in place
- Flag-person, when required, will direct traffic
- Underground utility work may require temporary road plates





# STAY UP-TO-DATE



Register for Construction Updates:

[purplelinemd.com](https://purplelinemd.com)

Email Us:

[outreach@purplelinemd.com](mailto:outreach@purplelinemd.com)

Call Us:

**443-451-3706/443-451-3705 (Español)**

Follow Us:

[@purplelinemd](https://twitter.com/purplelinemd)



QUESTIONS?



THANK YOU