



Prince George's County Council

Transportation, Infrastructure, Energy & Environment Committee

Purple Line Update

February 28, 2019

Charles Lattuca

Project Executive Director, Maryland Department of Transportation
Maryland Transit Administration

Fred Craig

Chief Executive Officer, Purple Line Transit Partners



PURPLE LINE

TRANSIT PARTNERS

Project Overview

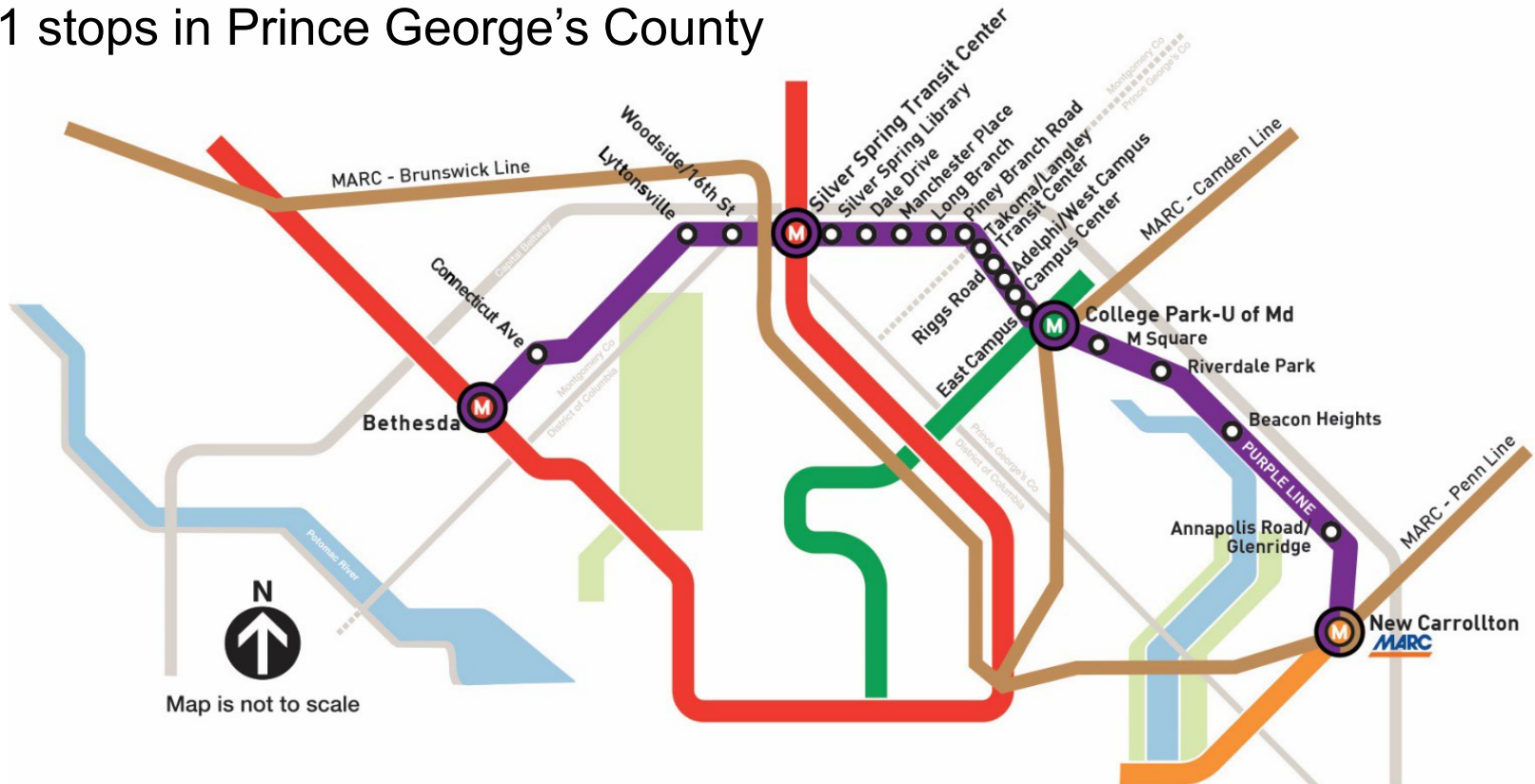
Project at-a-Glance

- MDOT MTA Goal for Passenger Service Remains End of 2022
- MDOT MTA/PLTP/PLTC Continue Negotiating Cost and Schedule Implications of Delay in Construction Start Due to Lawsuit
- Design & Construction Value is Approximately \$2B. Percent Complete:
 - Design – 85%
 - Construction – 10%
 - Vehicles – 10%
- Construction Now Underway Throughout 16.2-Mile Corridor

Purple Line: The Great Connector

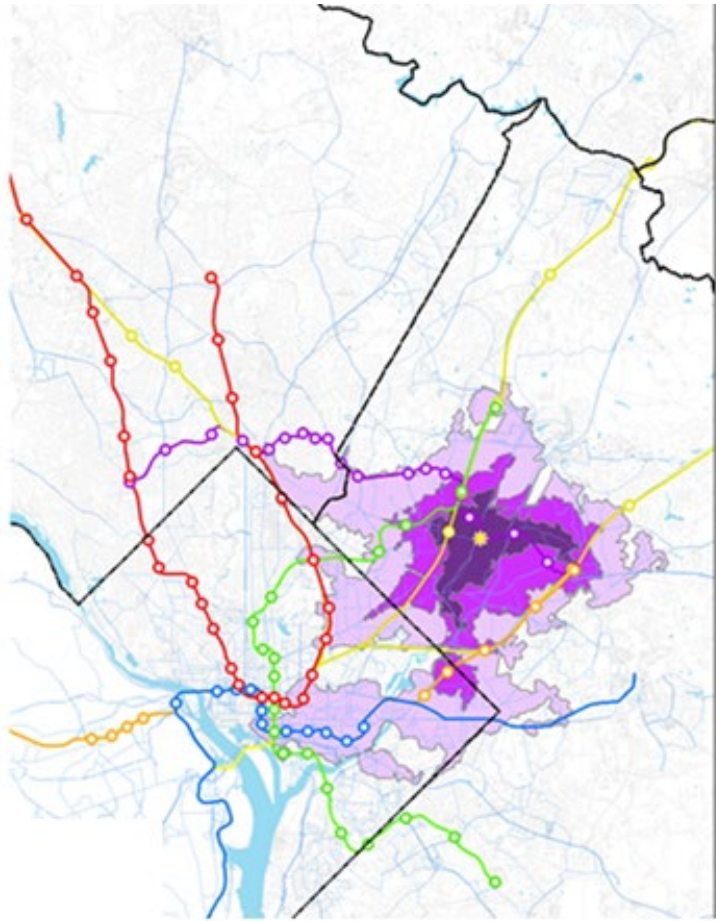
The Purple Line will connect:

- 4 segments of Metrorail
- All 3 MARC lines
- 11 stops in Prince George's County
- Amtrak Northeast Corridor
- Interstate and local bus services

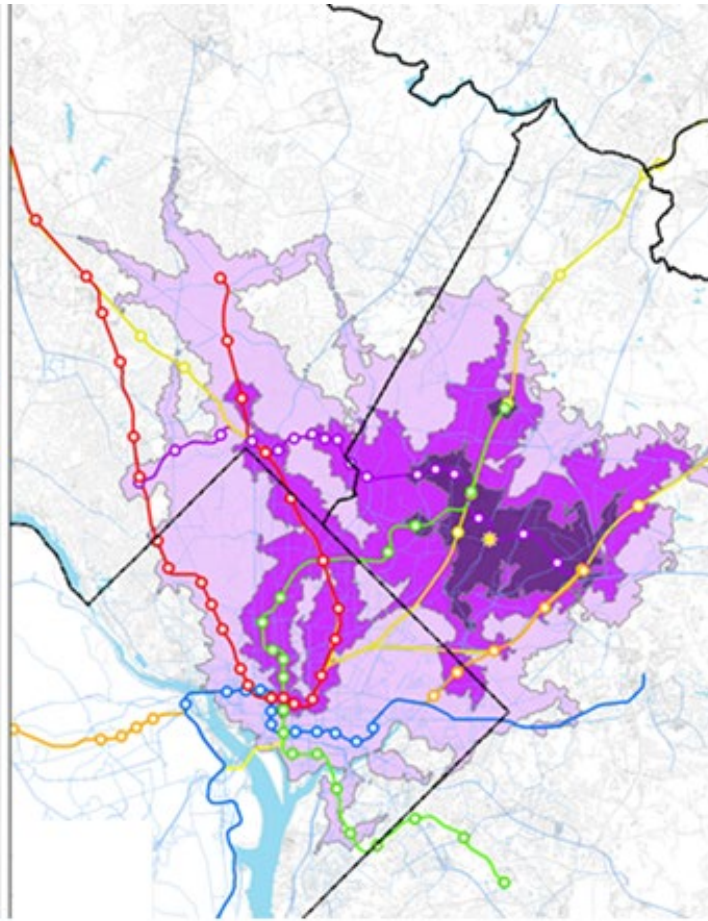


Expanding Access to Jobs

Without Purple Line



With Purple Line



**Riverdale
Park
Station
(commutes
within)**

30 minutes

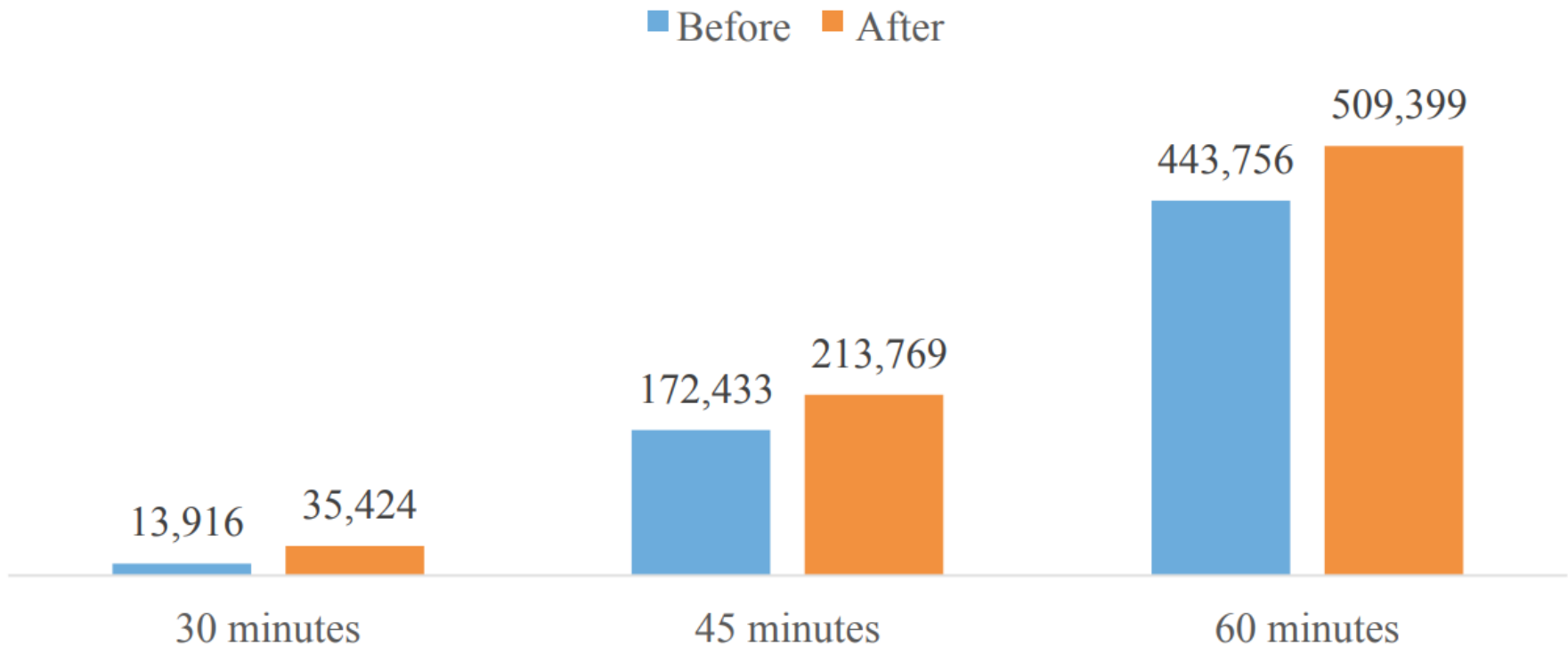
45 minutes

60 minutes

Source: UMD National Center for Smart Growth

Expanding Access to Jobs

Access to low- & medium-skill jobs from Takoma/Langley Transit Station



Source: UMD National Center for Smart Growth

Catalyst for Renaissance

- Nearly 4M SF of development reported underway or planned in Prince George's County's portion of Purple Line corridor
- More than half of the current/planned development is in the County – area larger than the usable space in the world's largest office building, the Pentagon
- Two examples:
 - **New Carrollton:** Urban Atlantic and Forest are building 2.7M SF mixed-use development
 - **College Park:** Corporate Office Properties Trust developing 75K SF building
- Transit-oriented development coordination with WMATA



Source: BizNow Commercial Real Estate News

Preparing for the Purple Line

- In Dec. 2018, MDOT MTA received \$2M federal grant to study:
 - How to improve access for riders
 - How to expand economic opportunity while preserving affordable housing & helping local businesses adapt to a changing corridor
- Builds on goals of Purple Line Corridor Coalition
- Collaboration of MDOT MTA, UMD National Center for Smart Growth, Maryland-National Capital Park & Planning Commission and the 2 county governments
- Largest transit-oriented development grant from Federal Transit Administration



Federal Transit
Administration

Expanding County Economic Opportunities

- **Design DBE Goal: 26%**
 - 26.8% DBE Participation to Date
 - 3 Prince George's County DBE Firms Participating
- **Construction DBE Goal 22%**
 - 6.2% DBE Participation to Date
 - 13 Prince George's County DBE Firms Participating

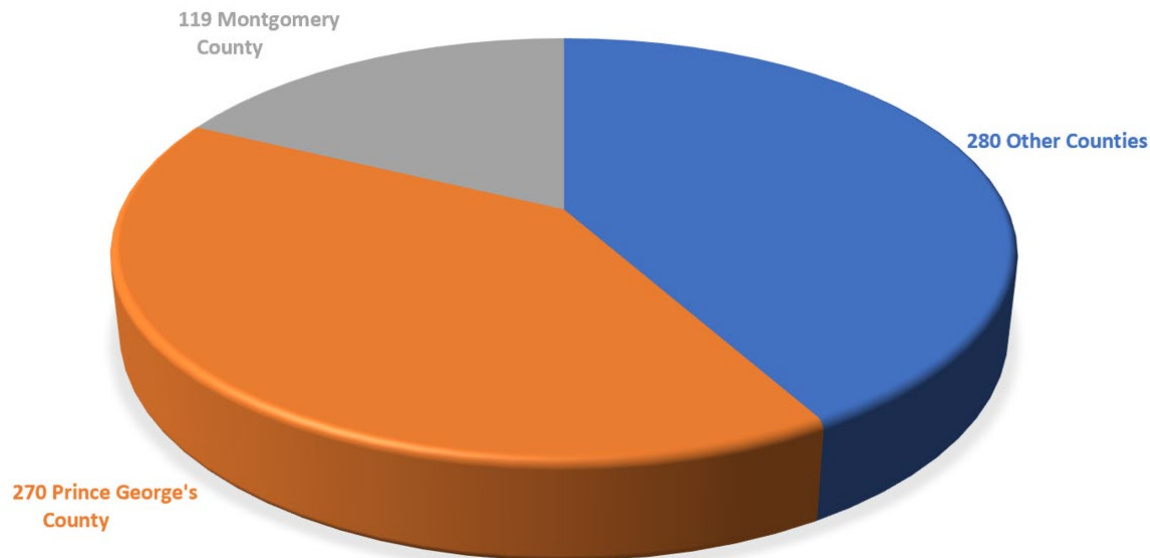
Expanding County Economic Opportunities

County DBE firms active on Purple Line include:

- Pessoa Construction of Fairmont Heights (concrete barriers)
- DOT Diamond Core Drilling of Hyattsville (bridge deck grooving)
- Bulldog Trucking of Beltsville (trucking)
- Metropolitan Protective Services of Lanham (security)
- Road Safe Traffic Systems of Upper Marlboro (maintenance of traffic)
- Blanchet Concrete Pumping of Largo (concrete pumping)

New bid info: www.purplelinetransitpartners.com/procurement

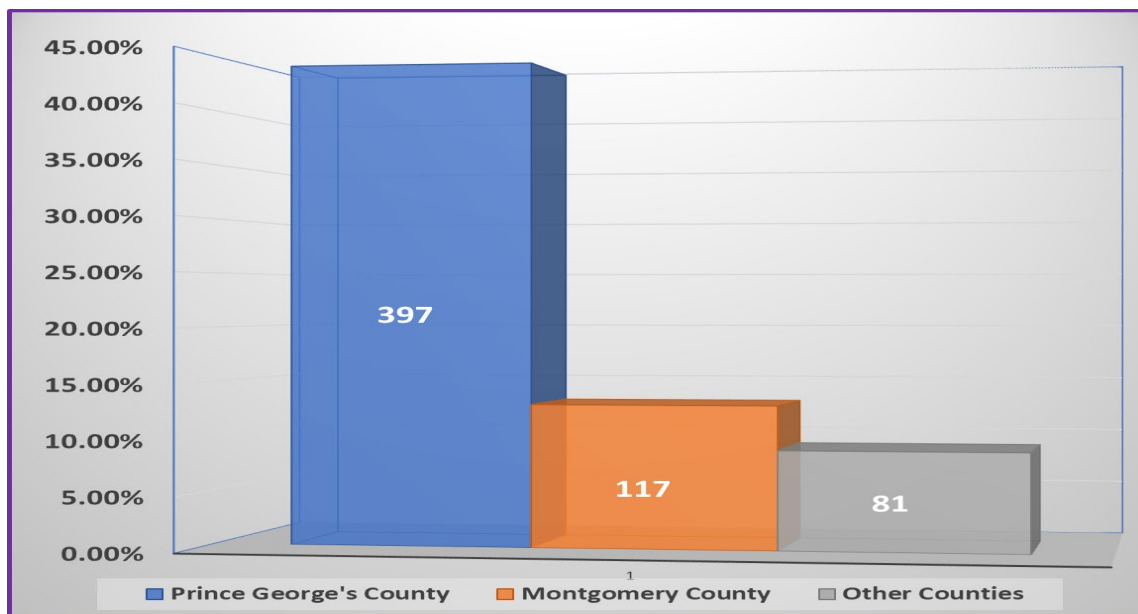
Prince George's County Jobs



Project-wide Craft Employment by Jurisdiction

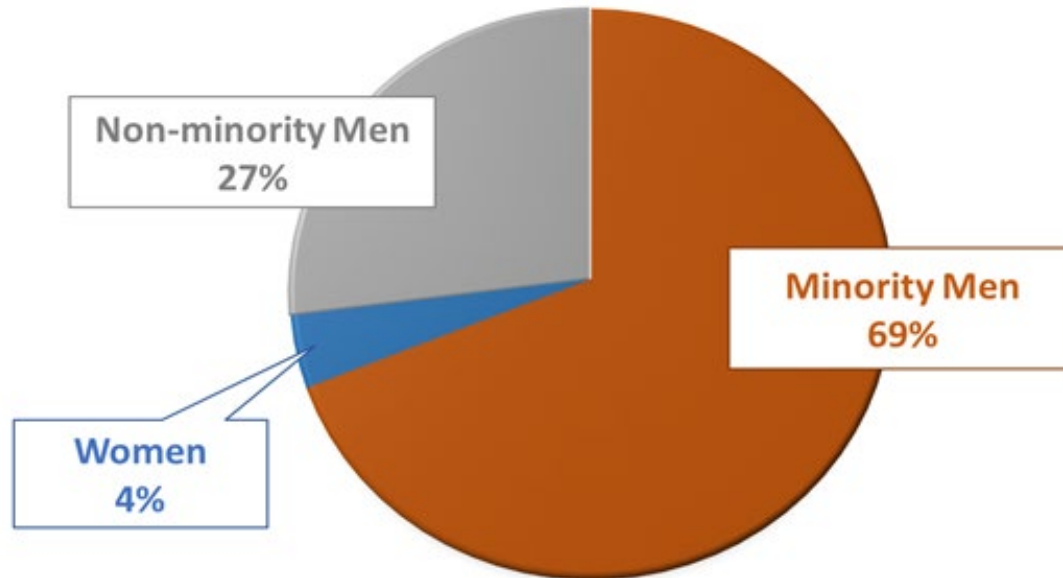
Prince George's County	270	25%
Montgomery County	119	11%
Other Maryland Counties	280	26%
Total Maryland Registration	669	62%

County Leads in Job Center Registrations



Job Center (903 Total Registrations)		
Prince George's County	397	44%
Montgomery County	117	13%
Other Maryland Counties	81	9%
Total Maryland Counties	595	66%

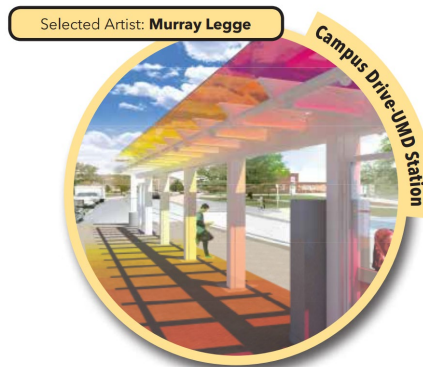
Affirmative Action/Equal Employment Opportunity



Category	Total	AA/EEO Goal	Current %
Full-time Employees	466		
Minority Participation	321	28%	68.9%
Female Participaton	19	6.9%	4.1%
Non-minority Participation	126		27.0%

Art-in-Transit

- Mission: Enrich aesthetics & highlight neighborhood identities
- \$6M for artwork at 21 stations, allocated equally among 2 counties
- Public meetings enabled selected artists to gain community input
- Community reps participated in selection of final art proposals
- Contract negotiations currently underway with selected artists
- Station artwork to be installed prior to passenger service



Construction Update

Veterans Pkwy./Ellin Rd.

- Ellin Rd. - Phase 1 includes drainage/water/civil work followed by track & final paving
- Phase 1 through November 2019
- Veterans Pkwy. – Multiple wall construction
- Erosion & sediment control
- Ellin Rd. lighting



Baltimore-Washington Pkwy.

- Temporary bridge construction for north & south parkway
- Temporary bridges to be set on/about April 1, with detour
- Ongoing construction with traffic switch in May 2019



Riverdale Rd./Kenilworth Ave.

- Riverdale Rd./Kenilworth Ave. flyover bridge underway
- Utility relocations
- Continuous lane closures on both roads for overhead power and communication lines, gas, water, sewer relocations



University Blvd.

- Utility relocations and drainage work
- Upcoming NW Branch bridge demolition
- Numerous lane closures through 2019 for utility & drainage work
- Traffic shift at NW Branch in April 2019



UMD Campus & College Park Metro Station

- Utility relocations and drainage work throughout campus
- Pump station relocation on Campus Dr.
- College Park Metro bus loop and utility work
- Coordination with Gilbane Devt. & College Park Metro Station
- MDOT SHA evaluating lowering speed limit on River Rd. to 35 mph



Vehicle Assembly

- 1st of 26 vehicles now being assembled in Elmira, NY
- 2nd vehicle undergoing testing
- Local testing at Glenridge Facility anticipated late 2020
- Capacity: 431 passengers, including 80 seated
- Designated space for persons with disabilities & bikes
- 37 miles of wiring in each vehicle = here to Orioles Park in Baltimore



Keeping Traffic Moving

Major traffic shifts

- Ellin Rd. Phase II
 - Oct 2019 – May 2020
 - Hanson Oaks routes to Veterans Pkwy.
 - Similar detour as currently
- Baltimore-Washington Pkwy.
 - May 2019 – May 2020
 - Traffic shifted on Pkwy. only
 - Riverdale Rd. unaffected

Keeping Traffic Moving

Major Traffic Shifts (cont'd)

- NW Branch at University Blvd.
 - Phase I, April 2019 – March 2020
 - Traffic Shifted to South side to demolish and replace north bridge
 - A pedestrian crosswalk added for sidewalk access
- Kenilworth Ave.
 - Right lane drop southbound in March 2019
 - Travel to be reduced to two lanes

Keeping Pedestrians Safe

- Pedestrian detours & work zones clearly signed
- When closures occur, alternate access provided
- ADA-compliant pedestrian access maintained to businesses, residences & bus stops
- **Pedestrians urged to obey construction signage and stay out of work zones**
- **Pedestrian safety hotspots:**
 - B-W Pkwy. Intersection
 - Veterans Pkwy.
 - University Blvd.
 - UMD Campus



Safety is Job #1

Through February 26, 2019:

- More than 2.7 million safe work hours worked
- Over 3,000 employees completed safety training



Aesthetics/Landscaping

- Project will fully implement the defined landscaping plan
- Every effort made to spare trees
- Forest being replaced in County at greater than 2:1 requirement
- Additionally, 13 acres along corridor to be reforested





Outreach



Business Outreach

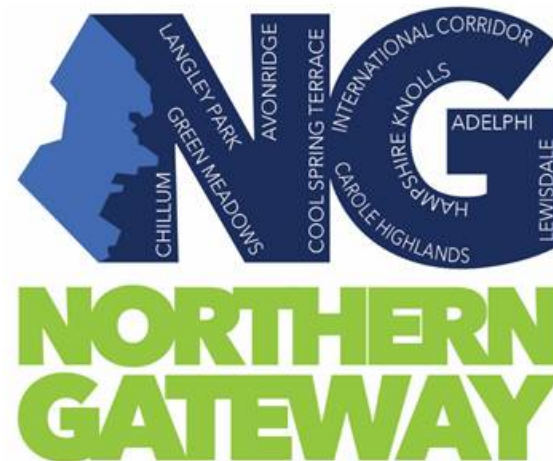
- Prior to construction, project team conducts one-on-one outreach to impacted businesses to:
 - Understand access/delivery requirements, other special needs
 - Collaborate in identifying solutions
- Coordinate with local businesses to design/install “open for business during construction” signs
- Outreach conducted in English and Spanish



Business Outreach

Currently coordinating with County business groups

- Northern Gateway Community Development Corp. (CDC)
- Takoma/Langley Crossroads Development Authority
- Central Kenilworth Ave. Revitalization CDC
- Riverdale Business Association
- Individual businesses



Public Outreach

Public outreach since August 2017 groundbreaking

- 3 rounds of meetings with 4 Prince George's County Community Advisory Teams (CAT)
- CAT meetings held prior to major construction phases
- Next CAT meetings anticipated early
- Held Open House at UMD last fall
- Conducted 2 job fairs
- Timely & substantive response to all construction inquiries



University of Maryland Outreach

- Appeared at UMD Career Fair (February 2019)
- Now recruiting UMD engineering students for internships
- Hosting UMD engineering student tour of tunnel (March 2019)
- Held Open House at UMD (September 2018)
- Future: Safety education prior to passenger service



Stay Up to Date

- Sign up for construction notices at Purplelinemd.com
- Thank you for helping us increase sign-ups
- For construction-related questions, contact PLTC:
 - Email at: outreach@ptcllc.com
 - 24/7 hotline at **240-424-5325**
- For general project questions, contact MTA:
 - Email at: outreach@purplelinemd.com
 - Call: **443-451-3706** or **443-451-3705 (Español)**

Questions/Comments