



College Park

CAT Meeting #4

May 7, 2019



Mike Madden

MDOT MTA Purple Line Deputy Project Director

Tim Pinkerton

PLTC Area 3 Construction Manager

Shaquanna Shields

PLTC Communications Supervisor



MEETING OVERVIEW

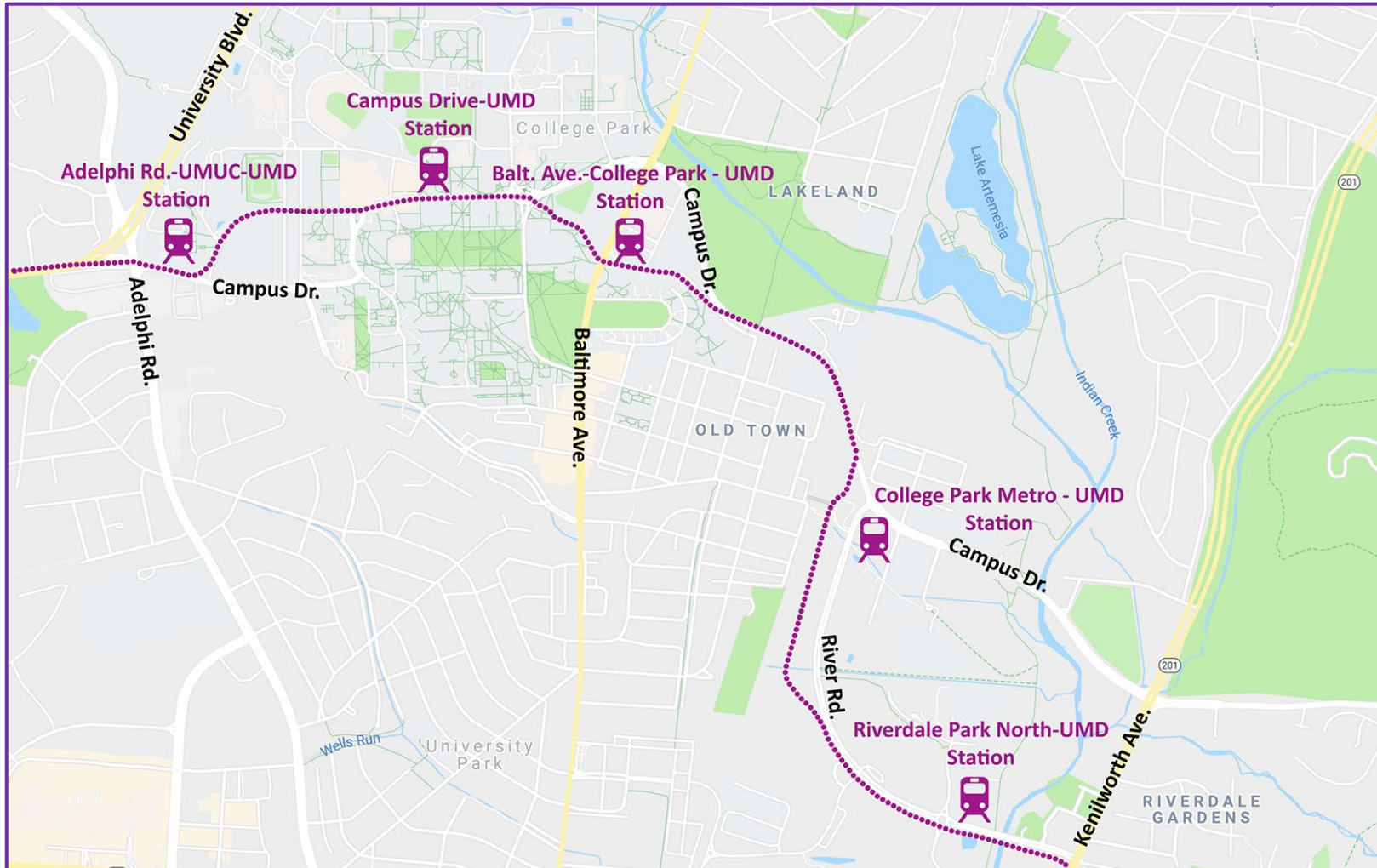
- **Purple Line project update**
 - Art-in-Transit
- **Construction progress overview**
 - Work Completed
 - Progress photos
 - 6-month look ahead
- **Maintenance of traffic & pedestrian safety**
- **Construction work hours**
- **Transit coordination**
- **Business outreach**
- **Updated Purple Line website**
- **Questions & answers**



College Park CAT Segment

Stations in this segment:

- Adelphi Rd. – UMUC-UMD
- Campus Drive – UMD
- Balt. Ave. – College Park – UMD
- College Park Metro – UMD
- Riverdale Park North – UMD





PURPLE LINE PROJECT UPDATE

- The Purple Line is being delivered as a Public-Private Partnership (P3) to finance, design, construct, operate, and maintain
- Construction is underway throughout the 16.2-mile corridor
 - Design: 85% complete
 - Construction: 15% complete
- Right-of-way acquisitions are nearing completion
- MDOT MTA's goal is for service to begin late 2022



ART-IN-TRANSIT

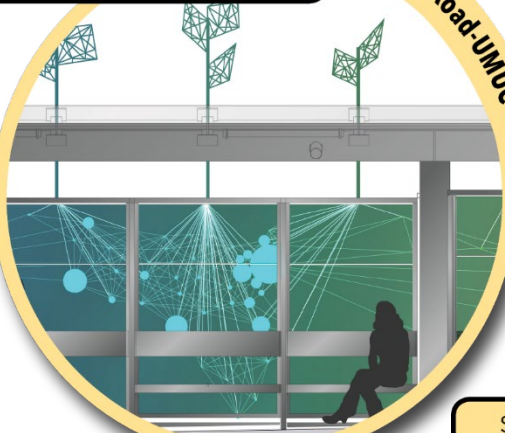
- The mission of the Purple Line Art-In-Transit program is to make public art an integral element of the project.
- Art will be incorporated into stations to enrich the aesthetics of the light rail system and support neighborhood identities.
- Artists have been selected, art proposals have been refined based on input received, and contracts are being negotiated.
- Artwork will be installed in its respective locations between 2020 – 2021.



SELECTED ARTISTS

Selected Artists: **Norman Lee & Shane Allbritton**

Adelphi Road-UMUC-UMD Station



Selected Artist: **Walter Hood**

Balt. Ave.-College Park-UMD Station



Selected Artist: **David Franklin**

Riverdale Park North-UMD Station



Selected Artist: **Murray Legge**

Campus Drive-UMD Station



Selected Artist: **Lynn Basa**

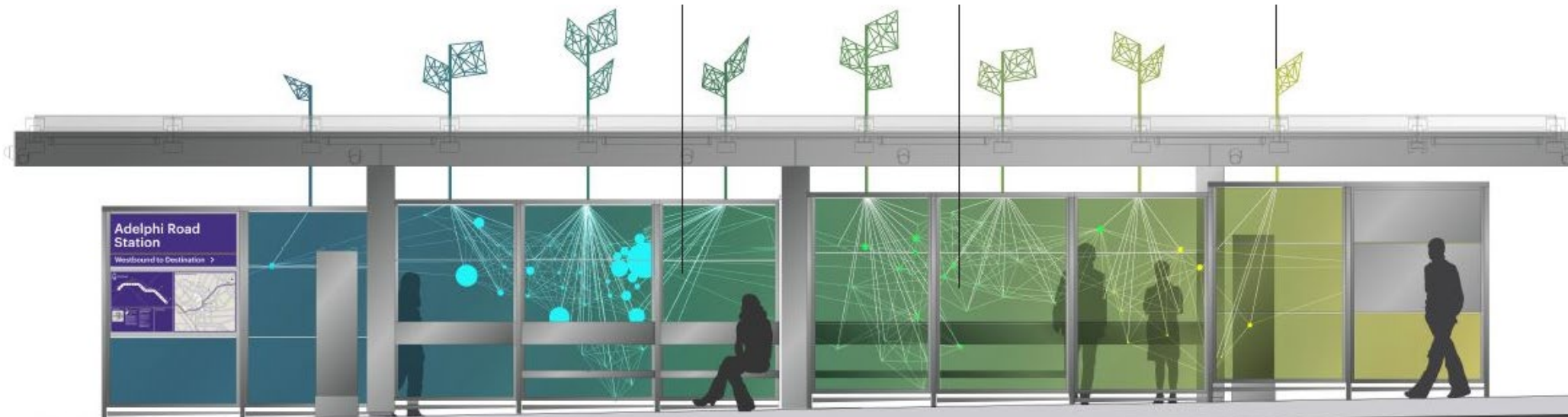
College Park Metro-UMD Station





ADELPHI ROAD – UMUC – UMD

The theme of this artwork is germination, global campus and growing minds. Artwork is located within the panels of the station and metal leaf structures “growing” through the top of the station. Each component of the station represents data associated with UMUC and its students.





CAMPUS DRIVE – UMD

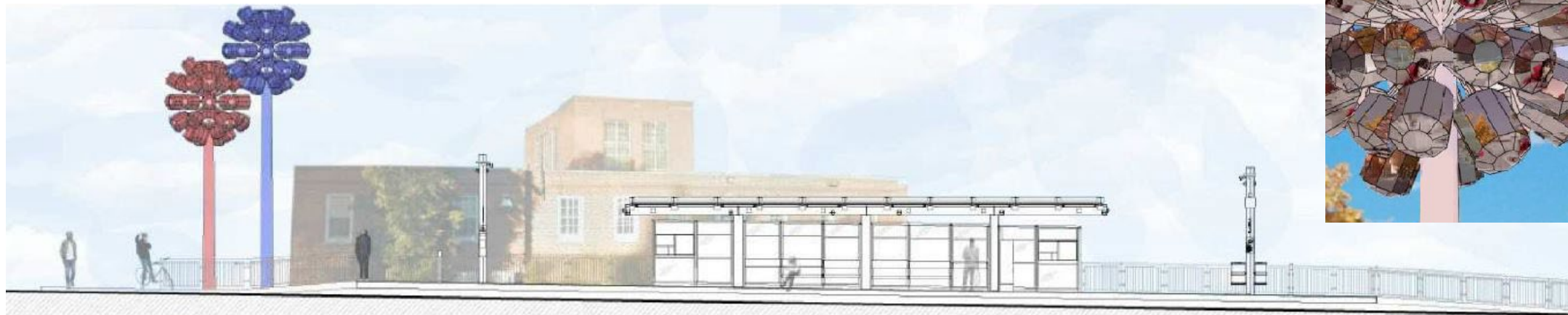
The theme of this artwork is chroma zone. Glass panels within the station canopy will be printed with a series of colors inspired by the University of Maryland and the Purple Line. The reflected color field will be constantly moving and changing with the sun and sky conditions. This station will be easily recognizable with architecture enhancing the station environment.





BALT. AVE. – COLLEGE PARK – UMD

The theme of these wayfinding pylons (that will surround the station) are inspired by bottle trees, a tradition originating in West Africa that is still practiced. Each pylon supports the shining, reflective, anodized bottle kaleidoscope. The bottles will be multifaceted, refracting light in all directions, reflecting sky, and trees. At night, LED lights will reflect into the sky.





COLLEGE PARK METRO – UMD

The artwork at this station is inspired by the College Park Airport, nicknamed the “field of firsts”. Red and white checkered pylons perform a navigational function related to their historic use. Re-imagined as sentinel beacons, the pylons will make the station immediately identifiable to users.





RIVERDALE PARK NORTH – UMD

This artwork was inspired by pylons used by early aviators to launch their craft into the sky. The pylon at the station forms a solid base that transforms and twists as it rises, transforming into a flock of colorful ascending, winged shapes. This pylon will act as a way-finding point to give the station a unique identity.





WORK CONDUCTED OVER THE PAST 6 MONTHS

- **Campus Drive West**

- Tree clearing and grubbing
- Installation of erosion and sediment control devices
- Underground utility relocations

- **University of Maryland**

- Storm drain installation near the Cole Field House and Regents Drive
- Installation of erosion and sediment control devices
- Underground utility relocations



UNIVERSITY OF MARYLAND PROGRESS PHOTO

Manhole installation
for UMD IT (utility
relocation)





WORK CONDUCTED OVER THE PAST 6 MONTHS *(CONTINUED)*

- **Rossborough Lane**
 - Tree clearing and grubbing
 - Installation of erosion and sediment control devices
 - Underground utility relocations
- **Campus Drive East (Paint Branch Parkway)**
 - Continued new pump station construction
 - Installation of storm drain
 - Underground utility relocations



CAMPUS DRIVE PROGRESS PHOTO

Excavating for the new
pump station at the
CSX/Metro underpass





WORK CONDUCTED OVER THE PAST 6 MONTHS *(CONTINUED)*

- **River Road**

- Began pile driving for the new bridge foundation over Northeast Branch of the Anacostia River
- Tree clearing and brush removal
- Continued installation of erosion and sediment control devices
- Storm drainage installation
- Underground utility relocations



RIVER ROAD PROGRESS PHOTO



Pile driving along River Road for the foundations of the future bridge



Utility relocations



6 MONTH LOOK AHEAD

- **Alignment-wide**
 - Utility relocations will be ongoing
 - Notifications will be provided by the utility companies
 - Installation of storm drains will be ongoing
- **Campus Drive West (Adelphi Road to Presidential Drive)**
 - Tree clearing continues
 - Installation of erosion and sediment control devices
- **University of Maryland**
 - Installation of erosion and sediment control devices
 - Start of construction and landscaping for the new “M”
 - Existing “M” to remain in place during this time



6 MONTH LOOK AHEAD *(CONTINUED)*

- **Rossborough Lane**

- Tree clearing continues
- Installation of erosion and sediment control devices
- Parking lot pavement demo

- **Campus Drive East**

- Continue pump station construction
- Continue installation of erosion and sediment control devices



6 MONTH LOOK AHEAD *(CONTINUED)*

- **College Park Metro**

- Closure of the College Park Metro bus loop for reconstruction
 - Notification will be provided to the public prior to the closure/temporary relocation of the bust stops
 - Bus stops will be temporarily relocated onto River Rd.
- Tree clearing, grubbing, and grading will begin after the bus loop closure

- **River Road**

- Continue bridge foundation and substructure for the new LRV bridge over the Northeast Branch of the Anacostia
- Construction of retaining wall south of College Park Metro Station



CONSTRUCTION WORK HOURS

- Standard work week is 40 hours
- Make-up / maintenance day will be Saturdays, as required
- Typical day shift: 7 a.m. – 5 p.m.
- Typical night shift: 7 p.m. – 4:30 a.m.
- The public will be notified through notifications on purplelinemd.com for:
 - Utility shutdowns
 - Road/driveway closures
 - Blasting/pile driving
 - Night work
 - Weekend work
 - Major lane closures



MAINTENANCE OF TRAFFIC – WHAT TO EXPECT

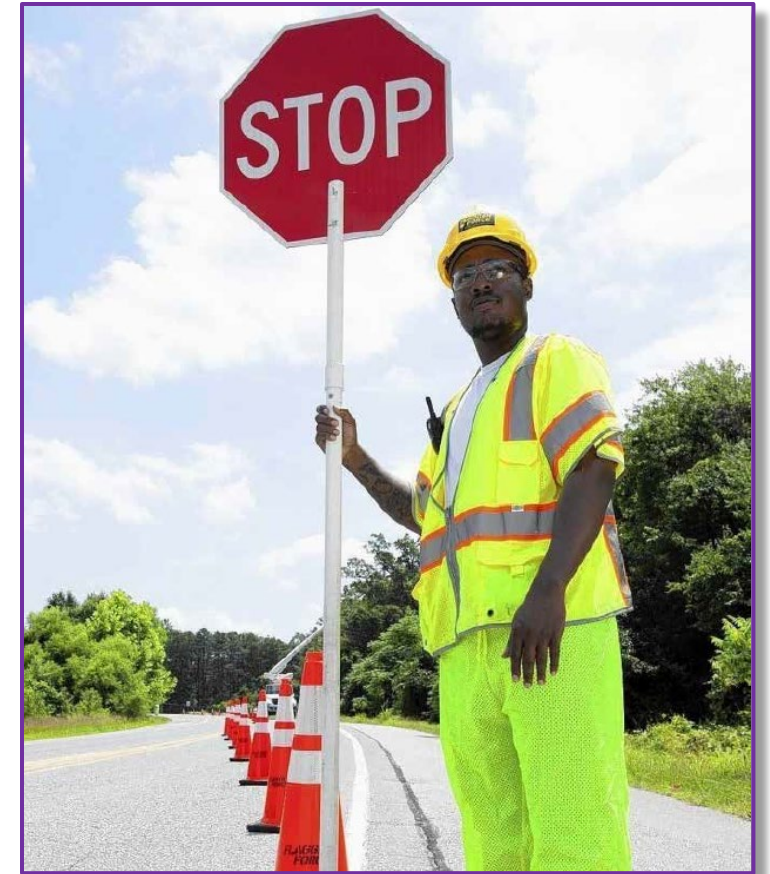
- Existing traffic patterns will change as work occurs, as needed
- Work may occur on both sides of the road and across roadways
- When a lane closure is required, a notice will be distributed via text and email (sign-up required through purplelinemd.com)
- Orange cones and barrels (temporary barricades) will be in place
- Flag-person, when required, will direct traffic
- Underground utility work may require temporary road plates





PEDESTRIAN SAFETY

- Work zones will be clearly marked and the public should not enter them
- Pedestrian detours will be clearly signed
- When closures occur, alternate access will be provided
- Pedestrian crossings will be maintained
- ***Pedestrians should obey construction signage and keep out of work zones***





TRANSIT COORDINATION

The Purple Line team is working with Prince George's County and has frequent meetings with the agencies operating:

- MetroBus
- The Bus (Prince George's Co.)
- WMATA



Coordination could include:

- Bus stop relocations
- Route modifications



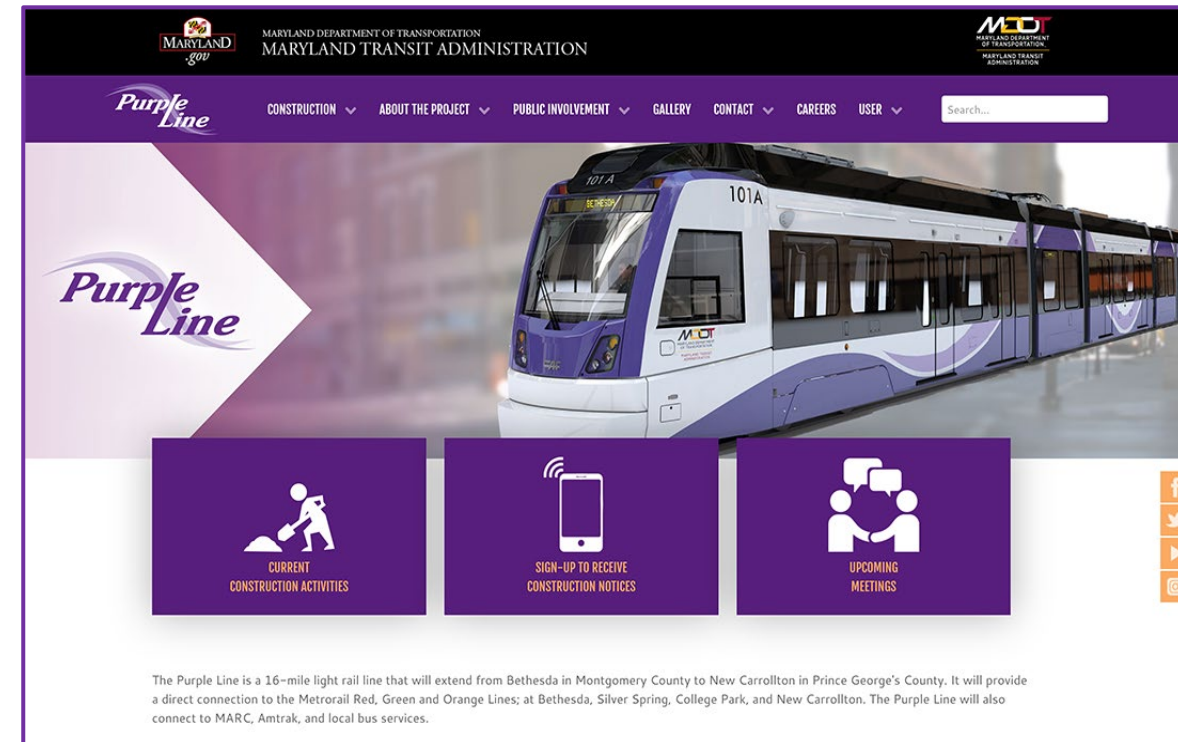
BUSINESS OUTREACH & COORDINATION

- The project's approach for business outreach consists of:
 - Engaging with those businesses potentially directly impacted by construction in the area
 - Understanding individual access and delivery requirements
 - Installation of "open for business" signage along the alignment
 - Coordination in English and Spanish (as needed)



REVAMPED PURPLE LINE WEBSITE

- Redesigned website rolled out end of April 2019 that features:
 - New photo gallery of progress pictures and videos
 - New Factsheets
 - Landscape Plans
 - New FAQ Page
 - New Station Illustrations
 - Construction Updates
- Sign up to receive construction notifications via email or text





STAY UP TO DATE ON PURPLE LINE PROGRESS

Sign up for construction notices at purplelinemd.com

- For construction-related questions and concerns, contact PLTC
 - Email: outreach@pltcllc.com
 - 24/7 hotline at 240-424-5325
- For general project questions and comments, contact MTA public outreach
 - Email: outreach@purplelinemd.com
 - Call: 443-451-3706 or 443-451-3705 (Para Español)

